



L O C A T I O N S

M E T R O



THINK ABOUT METRO

A BIG MOVIE SET

Endless unusual, historical, dark, mysterious, modern, emblematic and unique spaces just waiting to be the setting for great stories.

Modern and innovative stations like Chamartín, or historical stations, with a special atmosphere forged over time, such as the Chamberi ghost station.

Tracks, depots, workshops, technical installations, service galleries, tunnels, industrial buildings, warehouses...All kinds of urban railway installations and premises.

DISCOVER IT



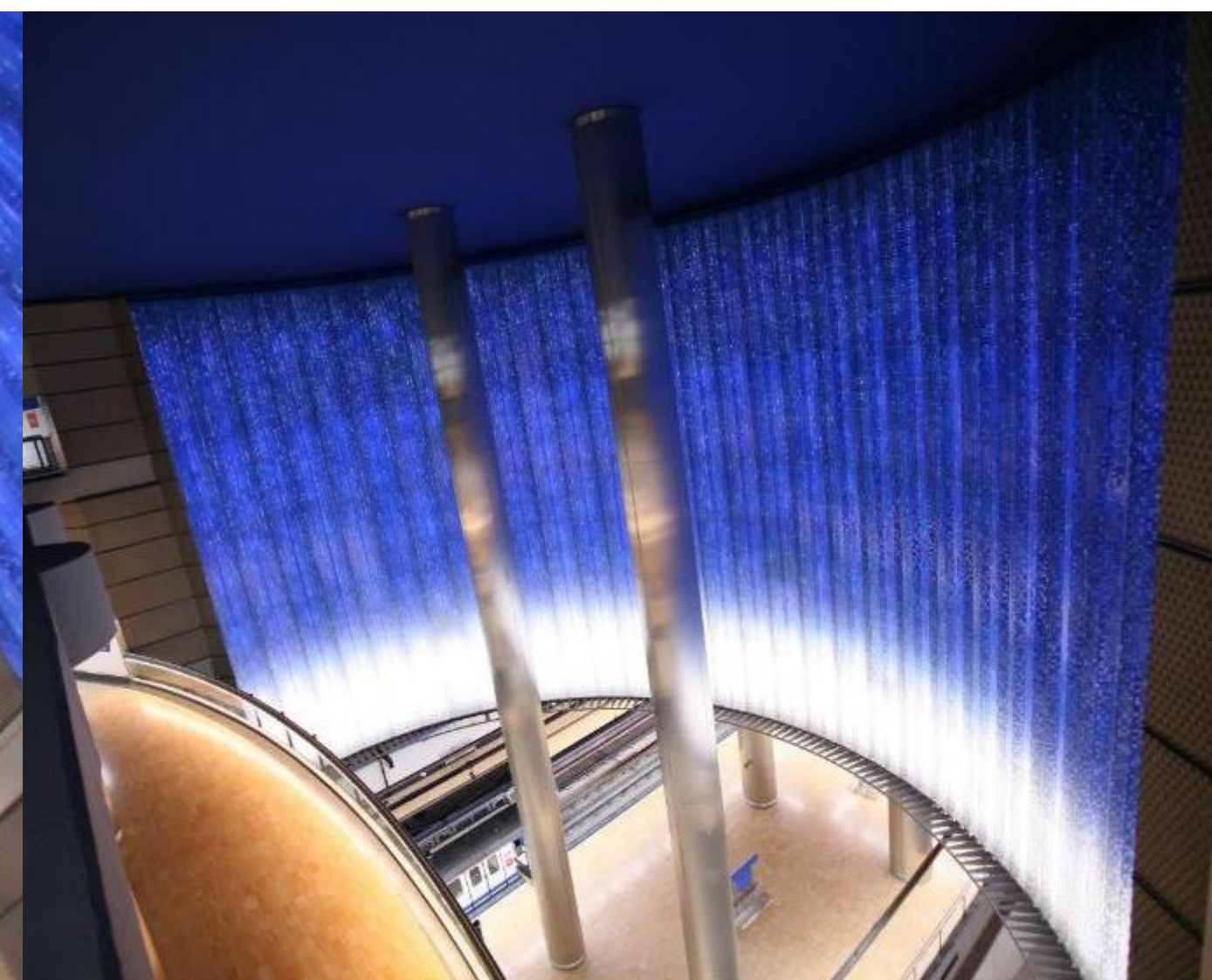
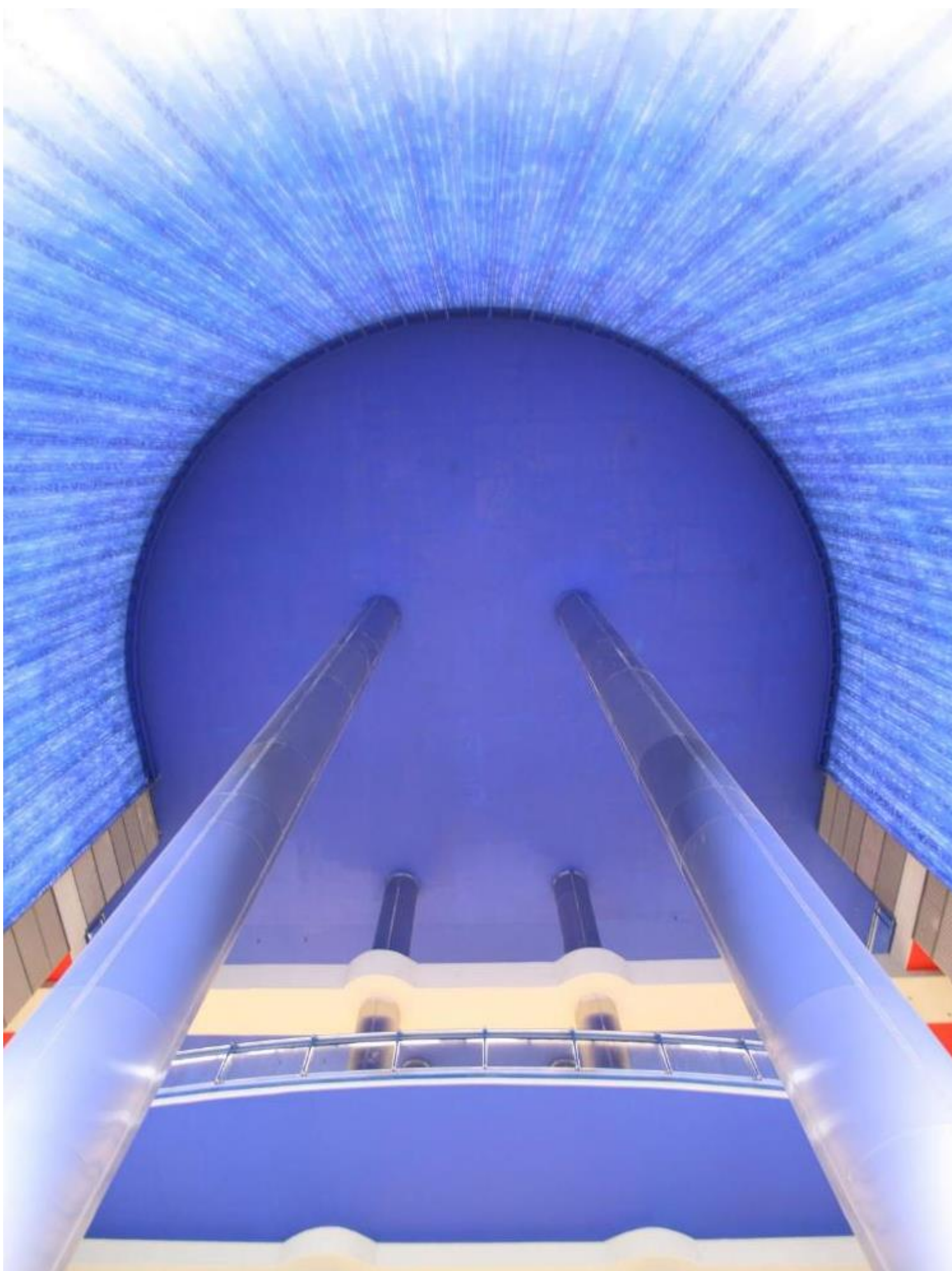
3 0 2 U N I Q U E S P A C E S

MODERN, EMBLEMATIC OR HISTORICAL STATIONS

These are just some of the most characteristic stations in the Metro network, but any of our 302 stations with their spaces and installations could be the perfect setting for your project

3 0 2 U N I Q U E S P A C E S

CHAMARTIN STATION

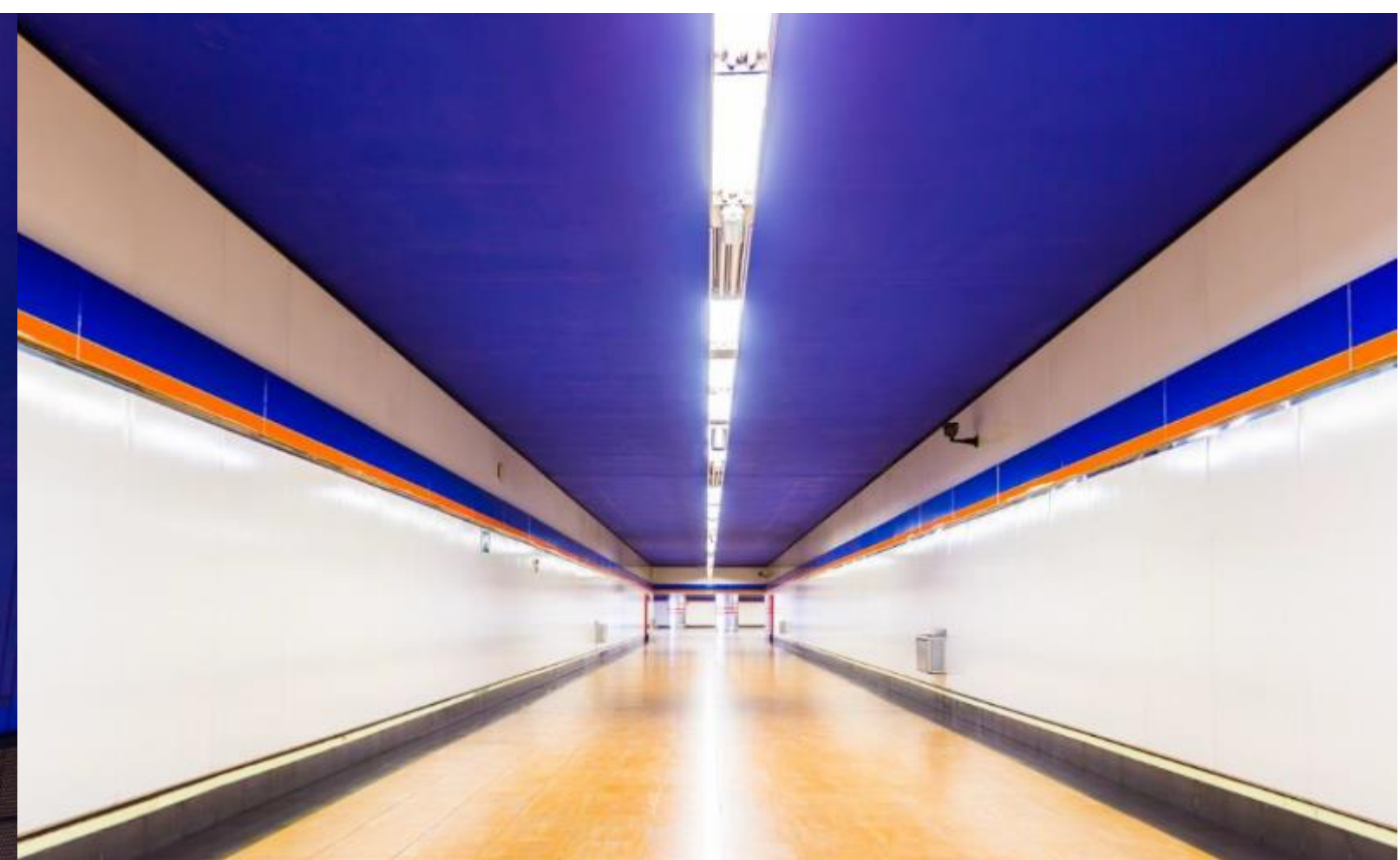
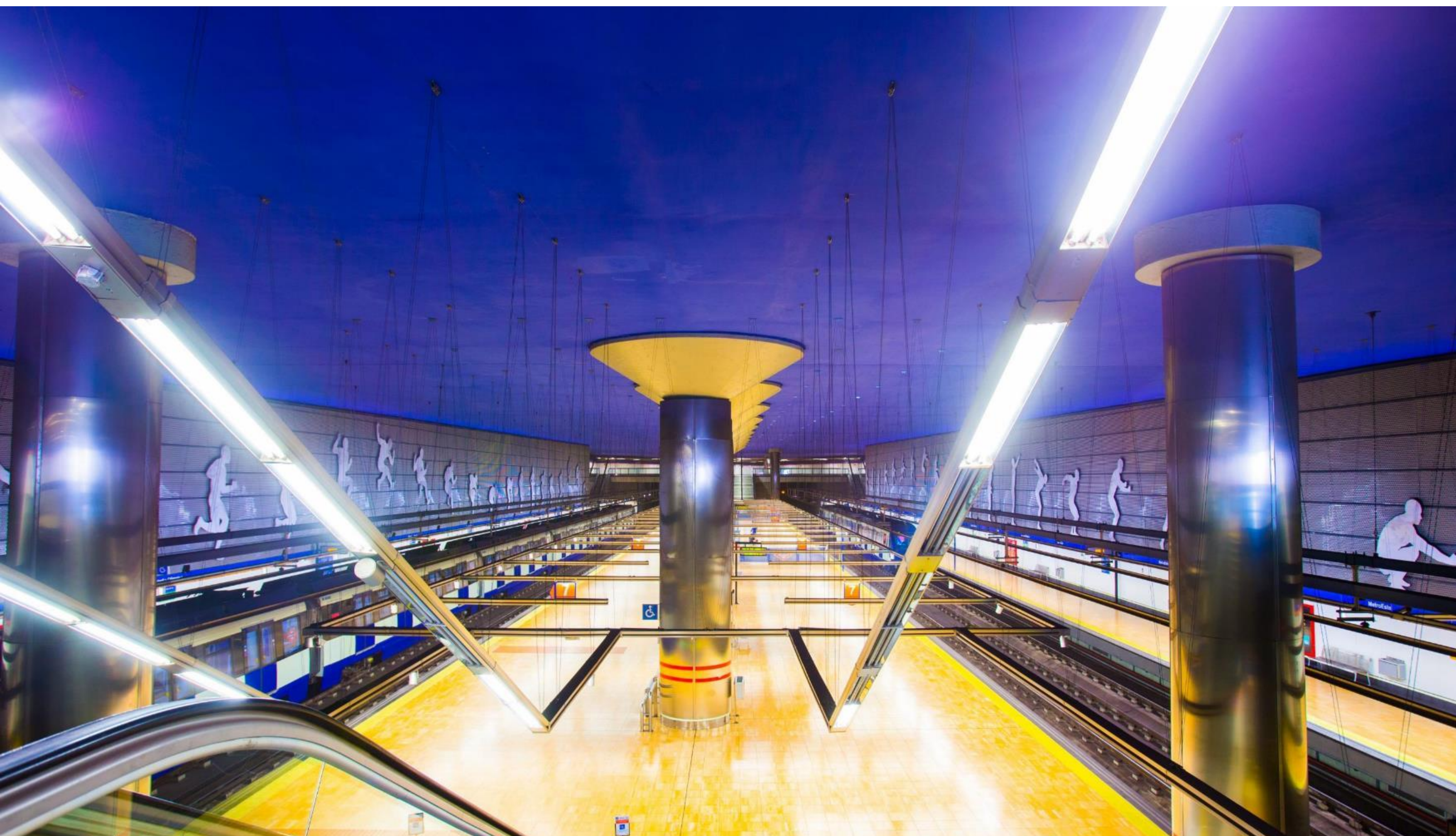


SPACIOUS

and architecturally eye-catching,
open spaces, double platforms,
unused platforms and old trains.



ESTADIO METROPOLITANO STATION

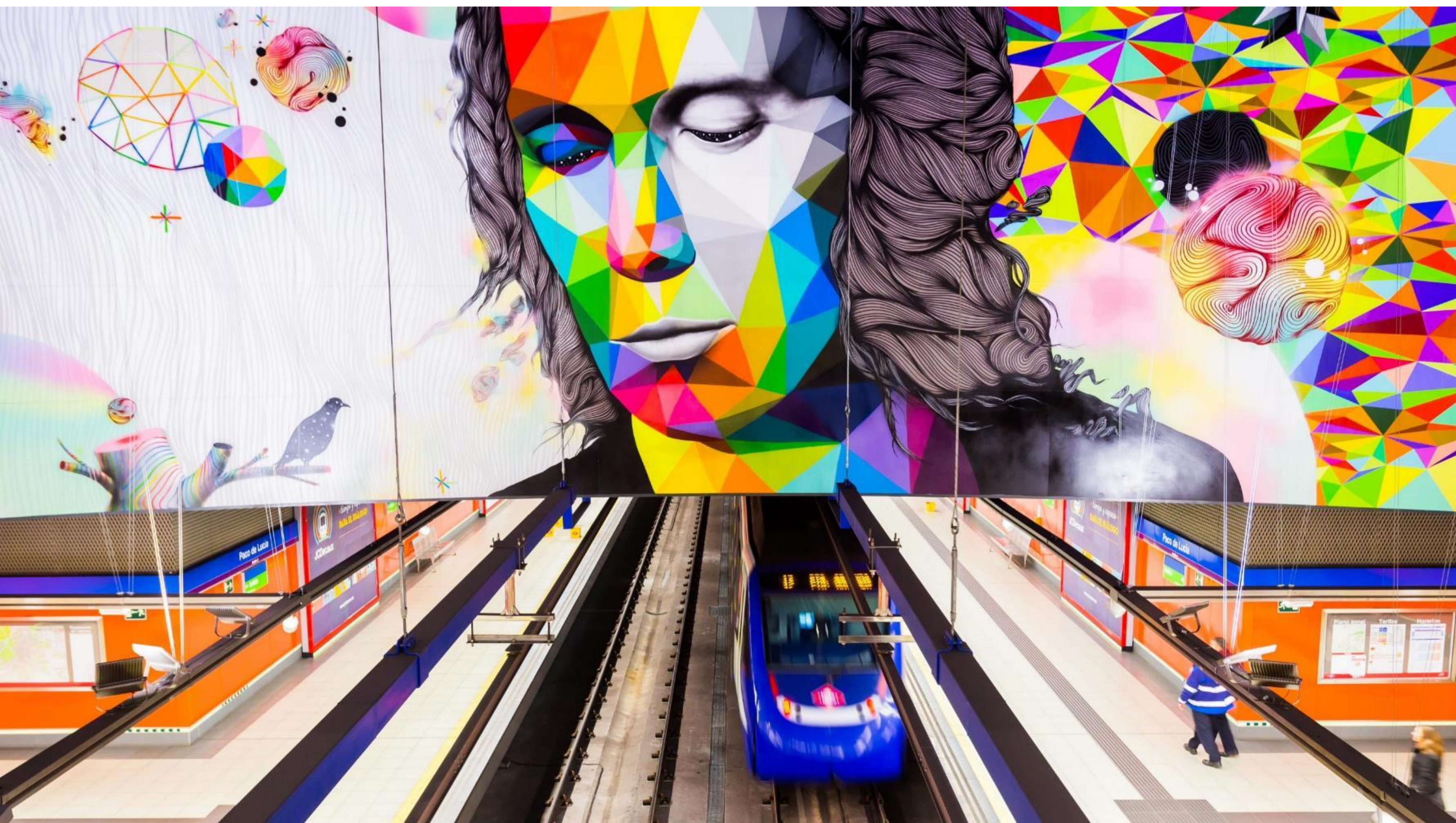


MODERN

and emblematic, with double platform, a large main hall and an unused secondary hall, 1,150 m2, wide passageways and digital signage. An unused platform, always available.



PACO DE LUCIA STATION



ARTISTIC

this great space is dominated by a large mural of a guitarist and after 22:30 you can film with a train on a platform that is currently unused



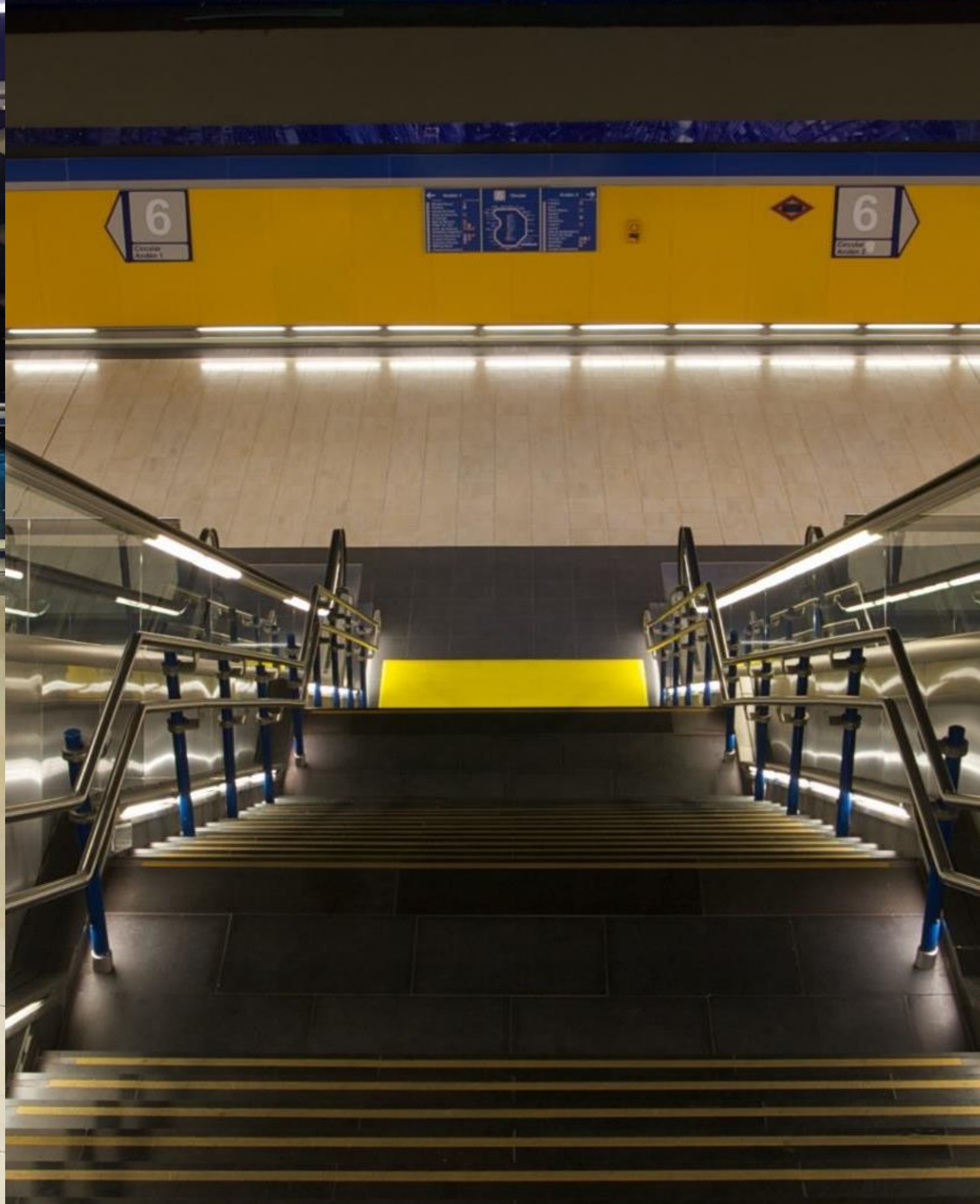
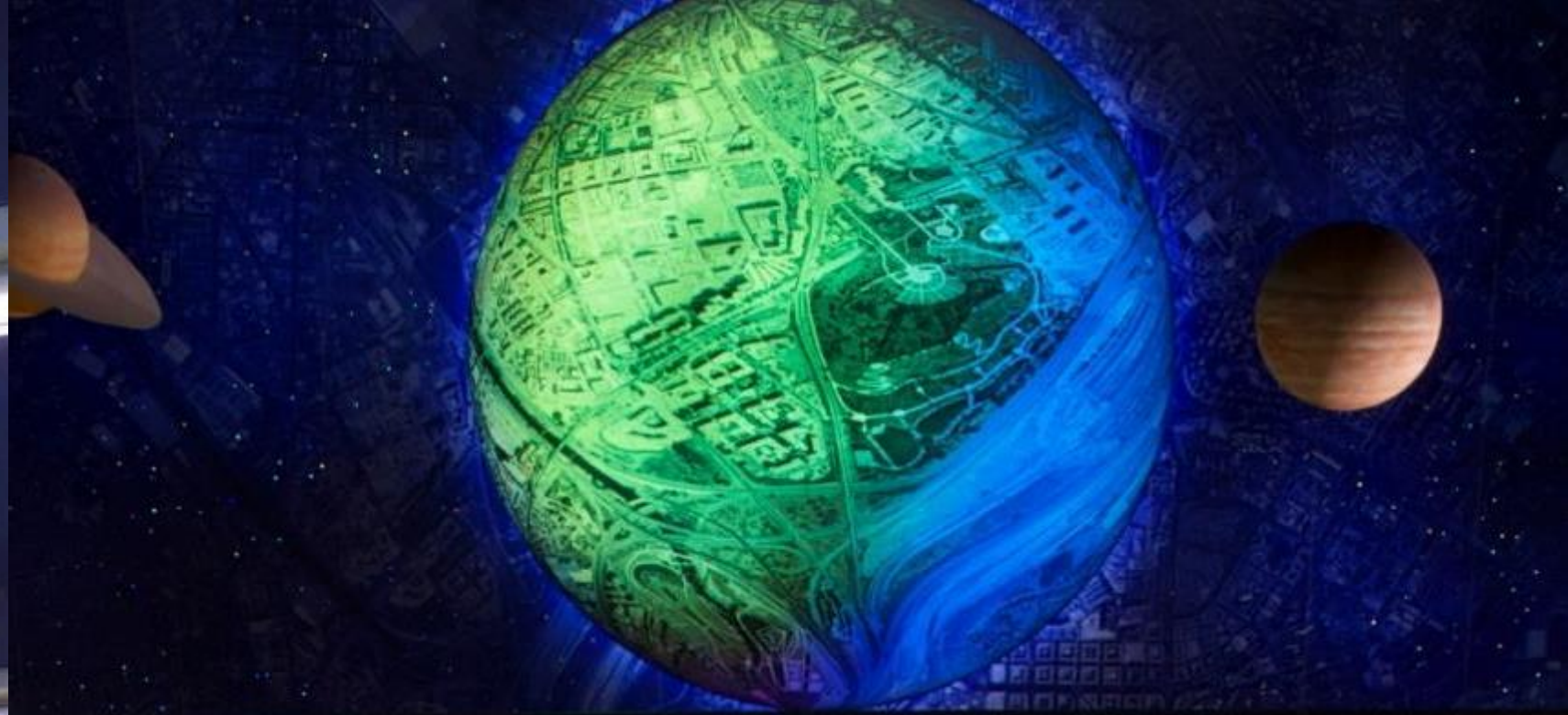
3 0 2 U N I Q U E S P A C E S

ARGANZUELA STATION



GREAT HALL

Inspired by the Planetarium



LAGO STATION



**GREAT
HALL**

Decorated with tiles



TIRSO DE MOLINA STATION



**HISTORIC
HALL**

Decorated with tiles



A photograph of a historic Madrid subway station. A blue train is stopped at the platform. The station has a vaulted ceiling and walls covered in graffiti. A large red and white triangular sign is visible on the right wall. The text "SPACES BURSTING WITH HISTORY" is overlaid on the right side of the image.

SPACES BURSTING WITH HISTORY

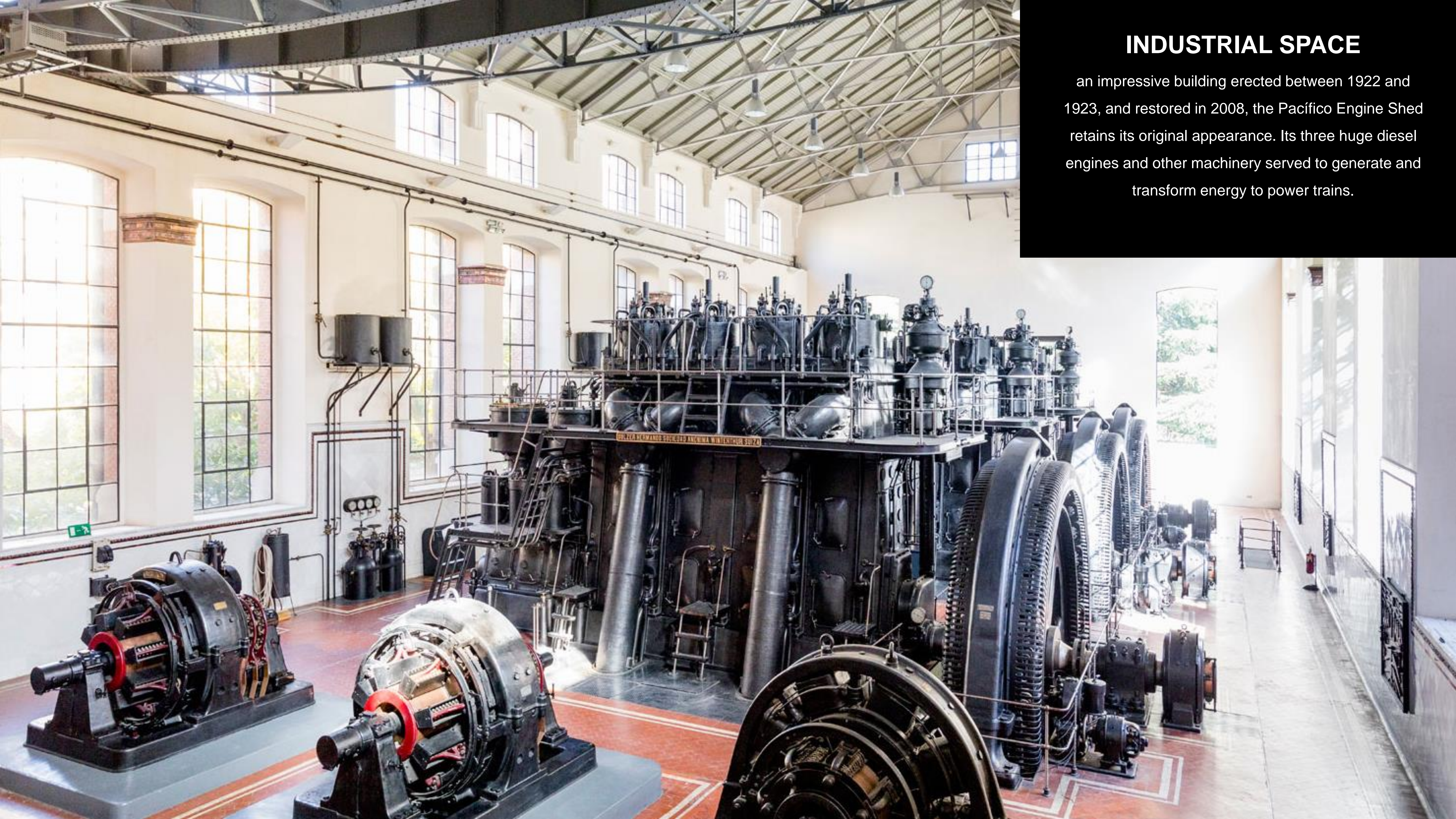
They exude the history of this means of transport which was so revolutionary for the city of Madrid. With an unquestionable historical value, these spaces transport you to another era.

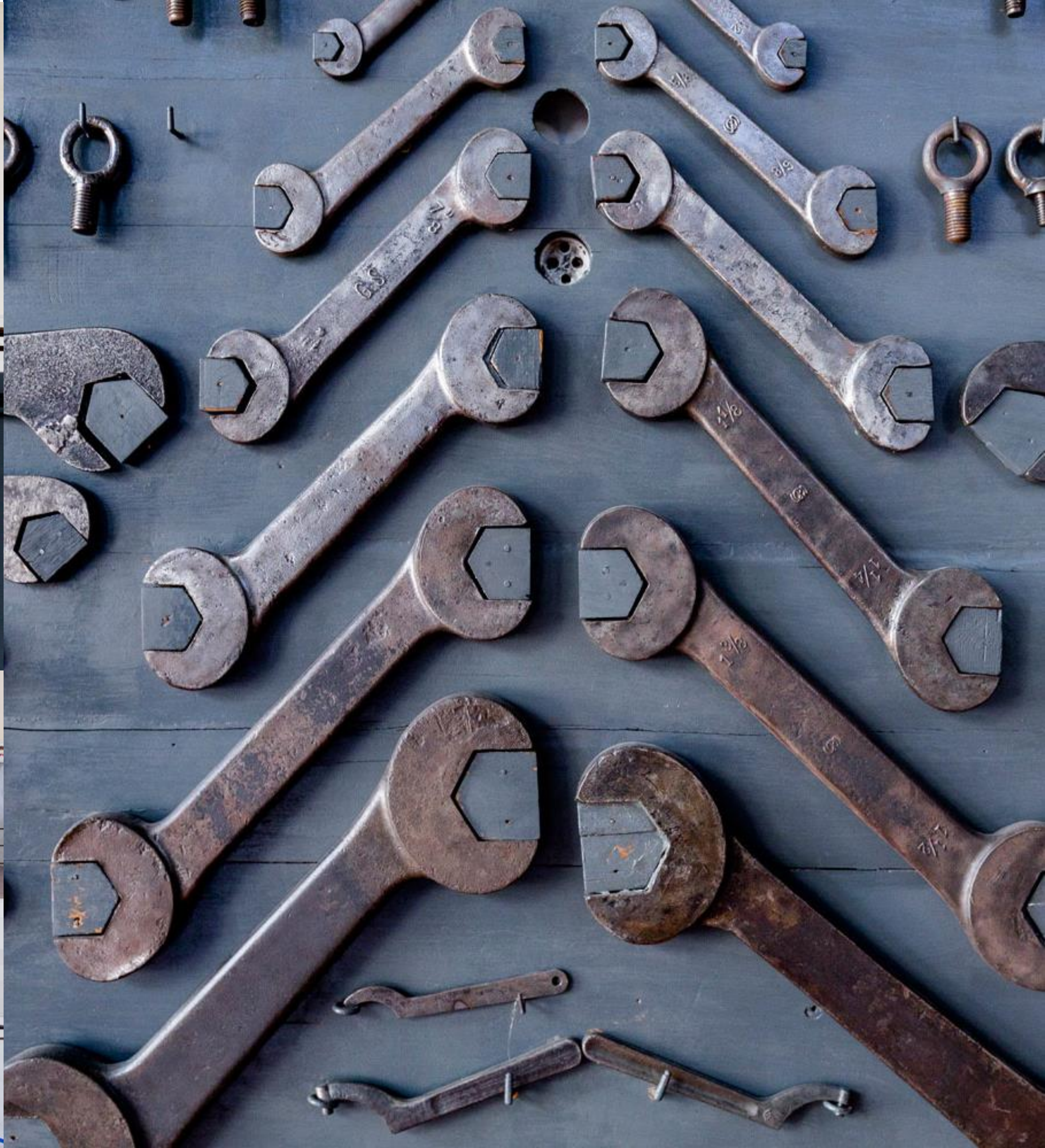
NAVE DE MOTORES



INDUSTRIAL SPACE

an impressive building erected between 1922 and 1923, and restored in 2008, the Pacífico Engine Shed retains its original appearance. Its three huge diesel engines and other machinery served to generate and transform energy to power trains.









CHAMBERÍ GHOST STATION



A JOURNEY INTO THE PAST

entering Chamberí station is like going back to the Madrid of the 1950s and 1960s. The old Chamberí station is part to the first Metro line inaugurated in Madrid in 1919. The vault is covered with bevelled white tiles and its buttresses were decorated with large squares of tiles from Seville that outline the contour of advertising posters. These posters are preserved almost exactly as they were created in the 1920s.





BILLETES USADOS

BILLETES USADOS

BILLETES USADOS

PROHIBIDO
EL PASO

ENTRADA





CHAMBERI

CIRELLA
MONTE R.A. 39

TELEFONO 15-55

CHAMBERI

SIRVASE APARESE
EN
METRO ESTACION GRAN VIA

E. GUERRE MAYOR SA. MADRID

RODRIGUEZ

Gal

PACÍFICO LOBBY





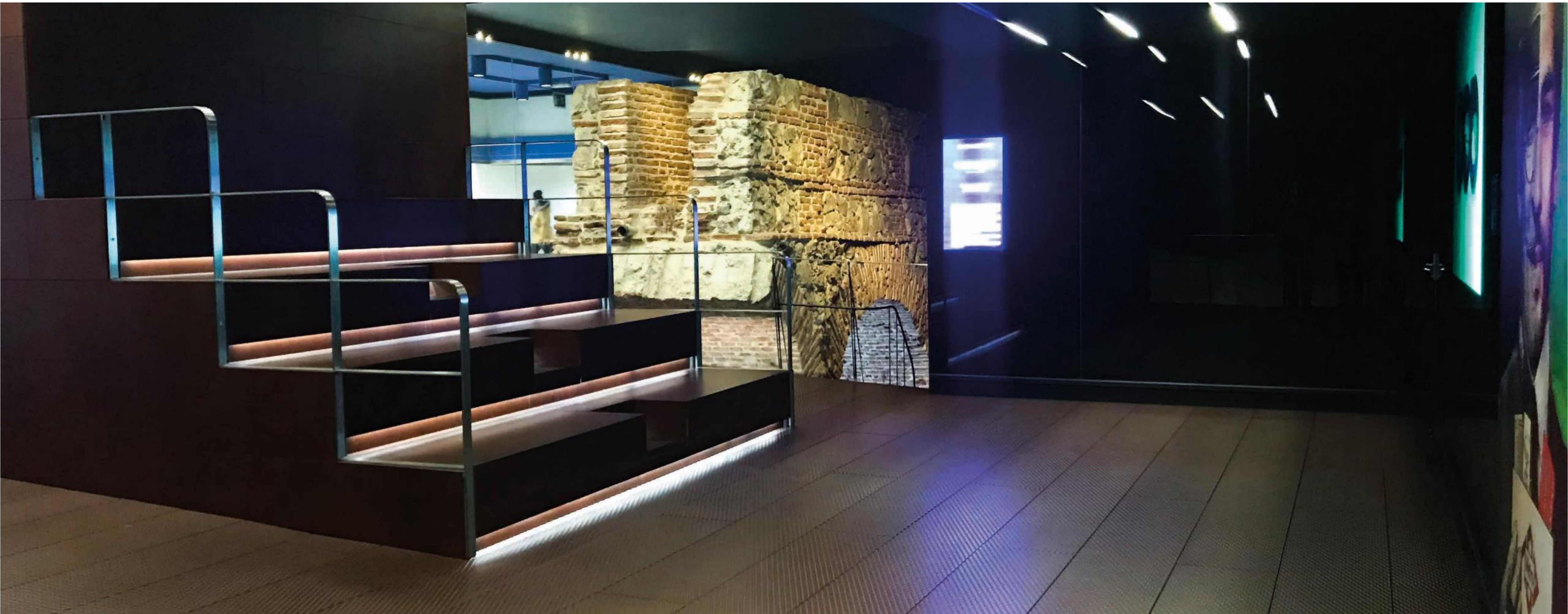
NOSTALGIA

the former lobby of the Pacífico station dates back to 1923, when this Line 1 station was inaugurated with the extension from Atocha to Puente de Vallecas. It stands on the platform towards Valdecarros.





ÓPERA CAÑOS DEL PERAL





ARCHEOLOGY

a recovered space at the Ópera Station, where you can see archeological remains from the 16th and 17th centuries, belonging to the Caños del Peral Fountain, the Amaniel Aqueduct and the Arenal Sewer.

Projection room. Stands for 30 people.



CASTELLÓ SPACE



INDUSTRIAL SPACE

former electrical
substation, built by the
famous architect
Antonio Palacios in
1925.







YOU CAN WRITE HERE

The background image is a dark, atmospheric photograph of an underground space, likely a metro tunnel or a large industrial facility. On the left, there is a multi-level concrete structure with a staircase. The floor is dark and reflective. In the distance, a bright light source creates a lens flare effect. The overall tone is moody and mysterious.

THE HIDDEN UNDERGROUND

UNIQUE SPACES, NEVER-BEFORE- SEEN PLACES.

Metro conceals large spaces hidden from the eyes of travellers,
versatile spaces that can become the perfect setting for your
project

UNIQUE SPACE

40

AVIACIÓN ESPAÑOLA







U N I Q U E S P A C E

CHAMARTIN







THE HIDDEN UNDERGROUND

Historical, modern or abandoned tunnels.

Metro is a network of various types of tunnels. Some are part of old, unused track layouts, others are modern, spacious and bright.

THE HIDDEN UNDERGROUND

CHAMARTIN







GOYA







JOAQUIN VILUMBRALES







VEHICLES

CLASSIC, RESTORED OR CIRCULATING TRAINS.

Metro has diverse mobile material (trains), from the recently restored and exposed classic trains at the Chamartín station, to a variety of vehicles dedicated to passenger transport or to the repair of facilities, currently in use.

VEHICLES

55

CLASSIC TRAINS





14



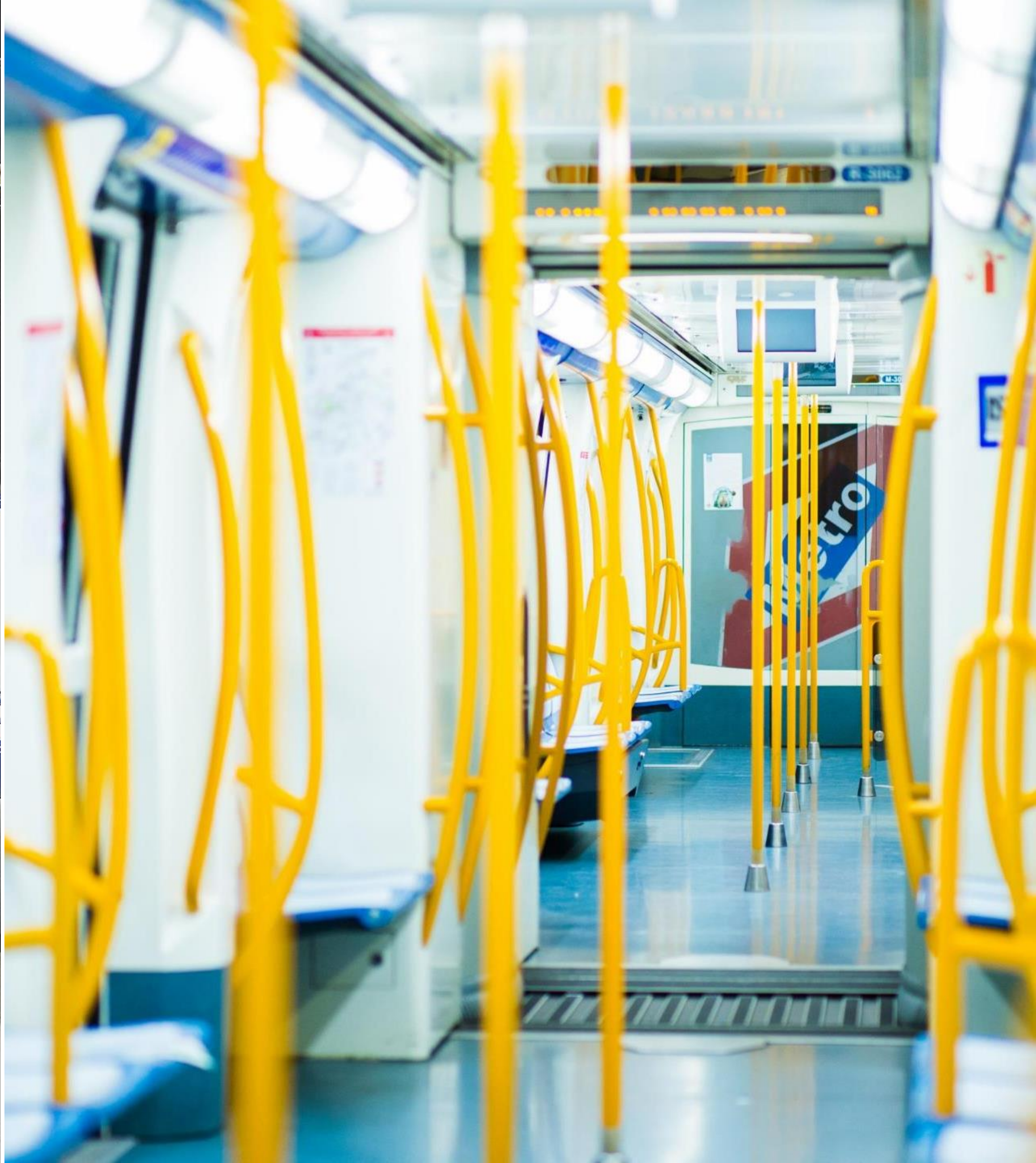


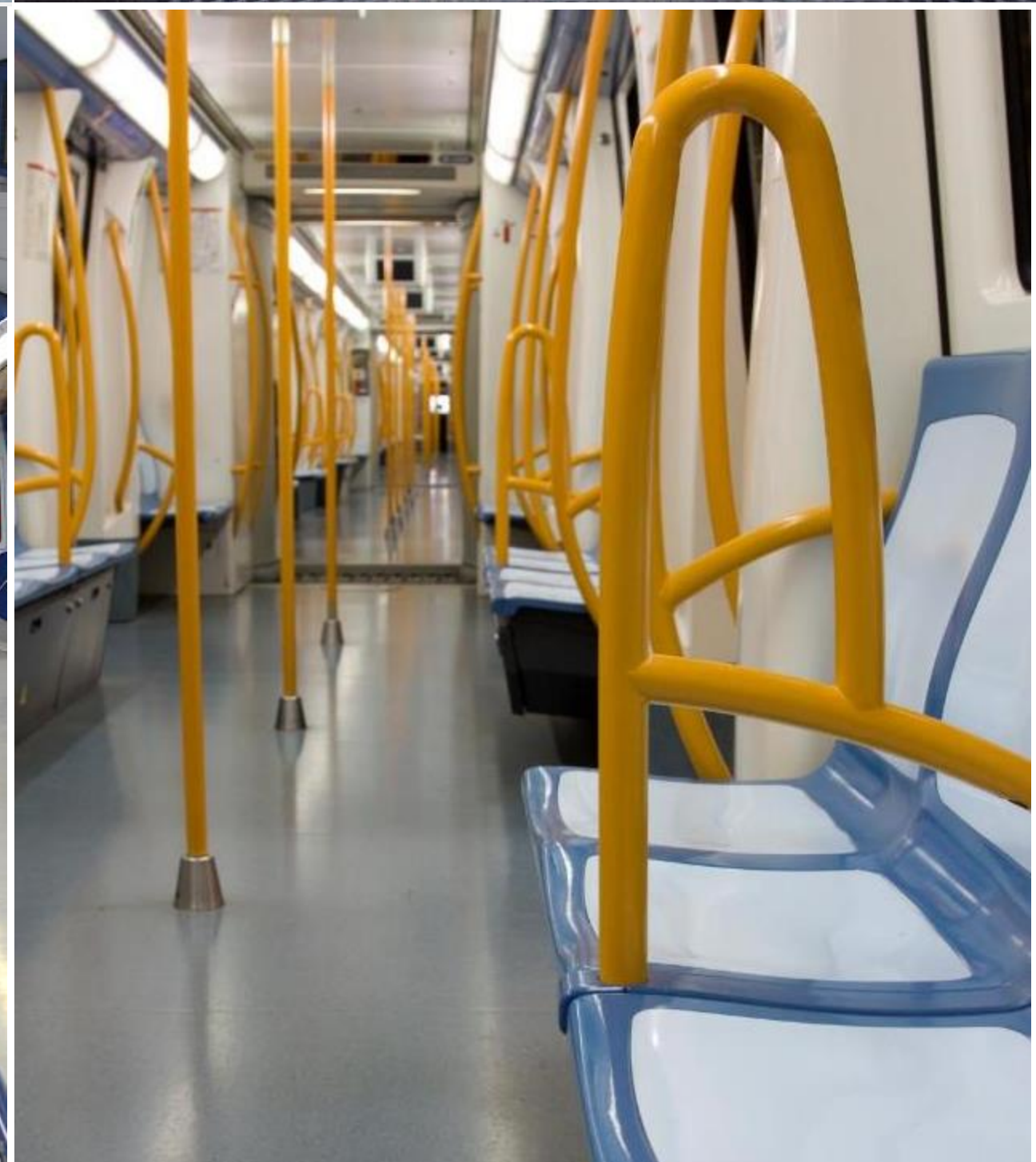
VEHICLES

MODERN TRAINS









SPECIAL VEHICLES





A photograph of a train depot at dusk. The image shows several parallel train tracks receding into the distance. Overhead power lines and support poles are visible across the scene. A small train is visible on one of the tracks in the middle ground. The sky is a mix of dark blue and orange from the setting or rising sun. The overall mood is industrial and serene.

G R E A T P L A C E S

SPECIAL VEHICLES TRAIN DEPOTS AND OTHER FACILITIES

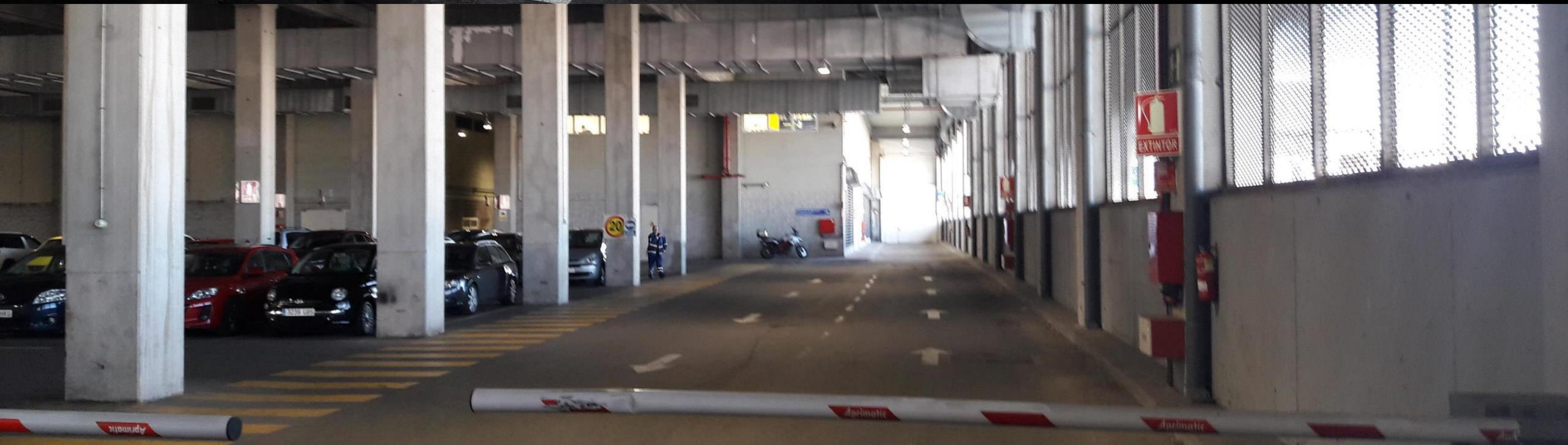
Train depots, large industrial units, workshops, unique office buildings
or spaces equipped for other functions.

G R E A T P L A C E S

66

HORTALEZA DEPOT





ALUCHE DEPOT





Tres causas de
accidentes:



No juegues con
tu Seguridad



Seguridad y Calidad
prioritarias
S+C







G R E A T P L A C E S

73

VENTAS DEPOT





MERAK
Nº 4







G R E A T P L A C E S

77

SACEDAL DEPOT









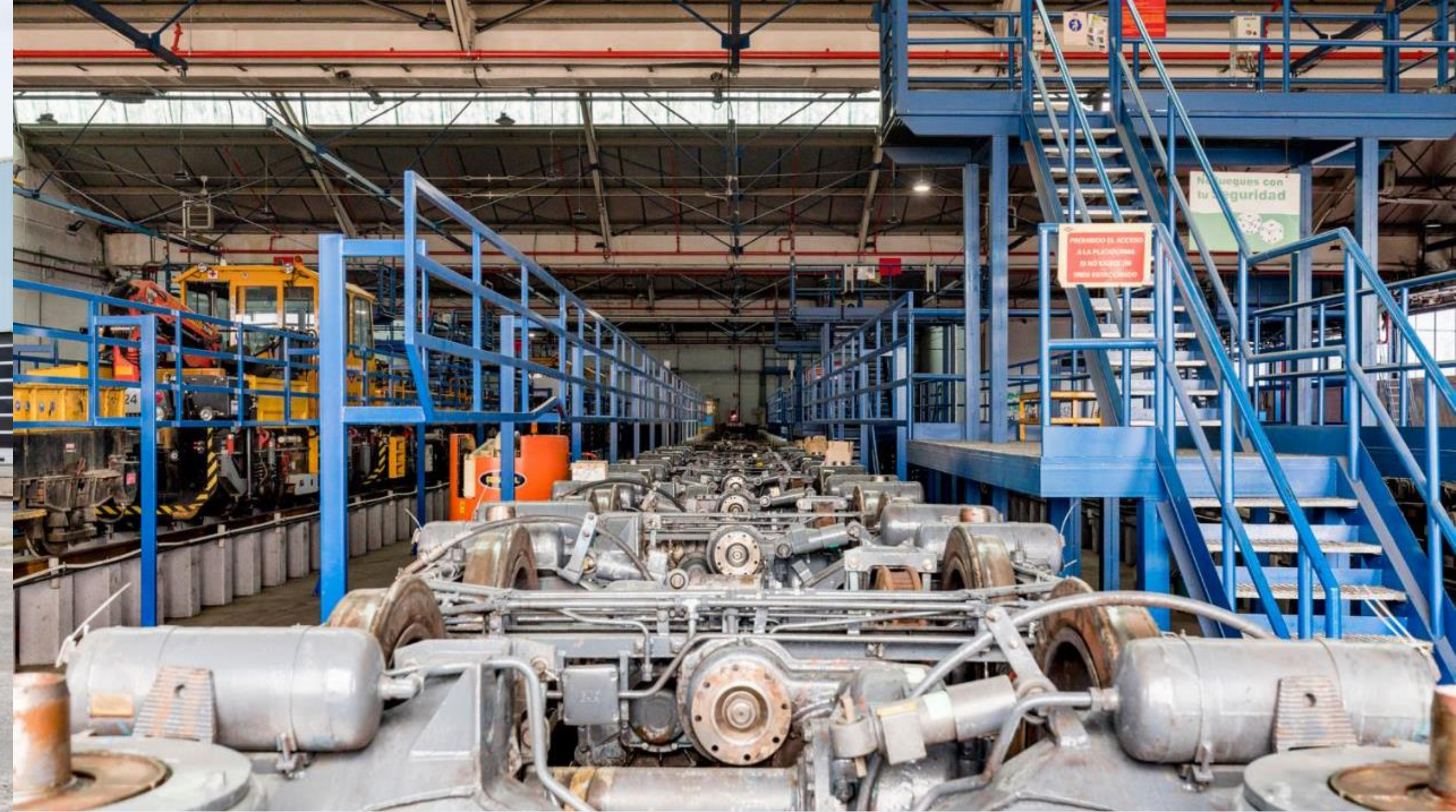
G R E A T P L A C E S

81

CANILLEJAS DEPOT











OFFICES

RECINTO DE CANILLEJAS





WAREHOUSE

RECINTO DE CANILLEJAS



PASSAGEWAYS





ABANDONED PASSAGEWAYS



MULTITUDE OF PASSAGEWAYS

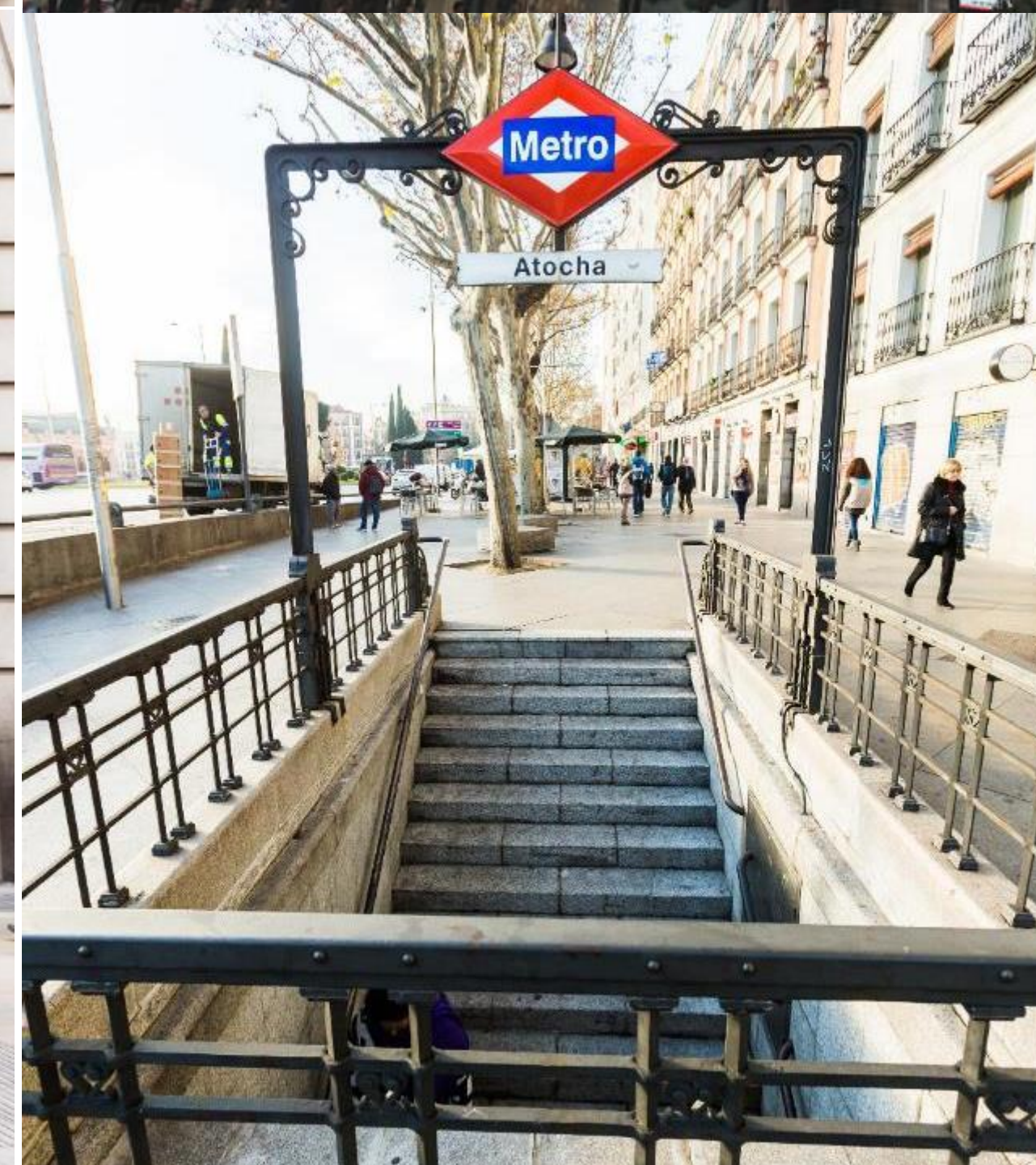




M E T R O O U T S I D E

PORTICOS, ACTORS IN THE LANDSCAPE OF MADRID

Metro has different designs of porticos and entrances that give access to the network's stations. They all play a fundamental role in the story told by the landscapes of the different districts of Madrid.







GENERAL TERMS AND CONDITIONS

- 1**

The production company must have a current civil liability policy covering any kind of damage that may be caused as a result of the work for which Metro de Madrid's spaces are contracted.
- 2**

During its activities, the production company will comply with current regulations on Occupational Risk Prevention in the space where the work is carried out.
- 3**

Prior to commencing work, Metro de Madrid S.A. and the production company will sign a contract establishing the terms and conditions for the work.
- 4**

The amount to be paid by the client will always be subject to the current processing costs of each financial year and any necessary extras. This amount will be paid to Metro de Madrid S.A. before work is carried out.
- 5**

Any filming or photographic work is absolutely subordinate to rail traffic operations in spaces where this activity is carried out.
- 6**

When work is completed, the production company is responsible for the cleaning and good conditions of the space assigned, as well as dismantling sets and props, taking care of the original aesthetics of the space and doing so in safe conditions.
- 7**

Metro de Madrid requires the payment of a deposit, which will be returned if the terms agreed for its return are met.
- 8**

Depending on the location and production, Metro will require the submission of a self-protection plan sufficiently in advance of filming.
- 9**

Metro requires security personnel to be hired for all filming.



SERVICIO COMERCIAL

METRO DE MADRID

To expand this information or arrange visits to our facilities, contact us at

LD_SerComercial@metromadrid.es

91 379 02 95

