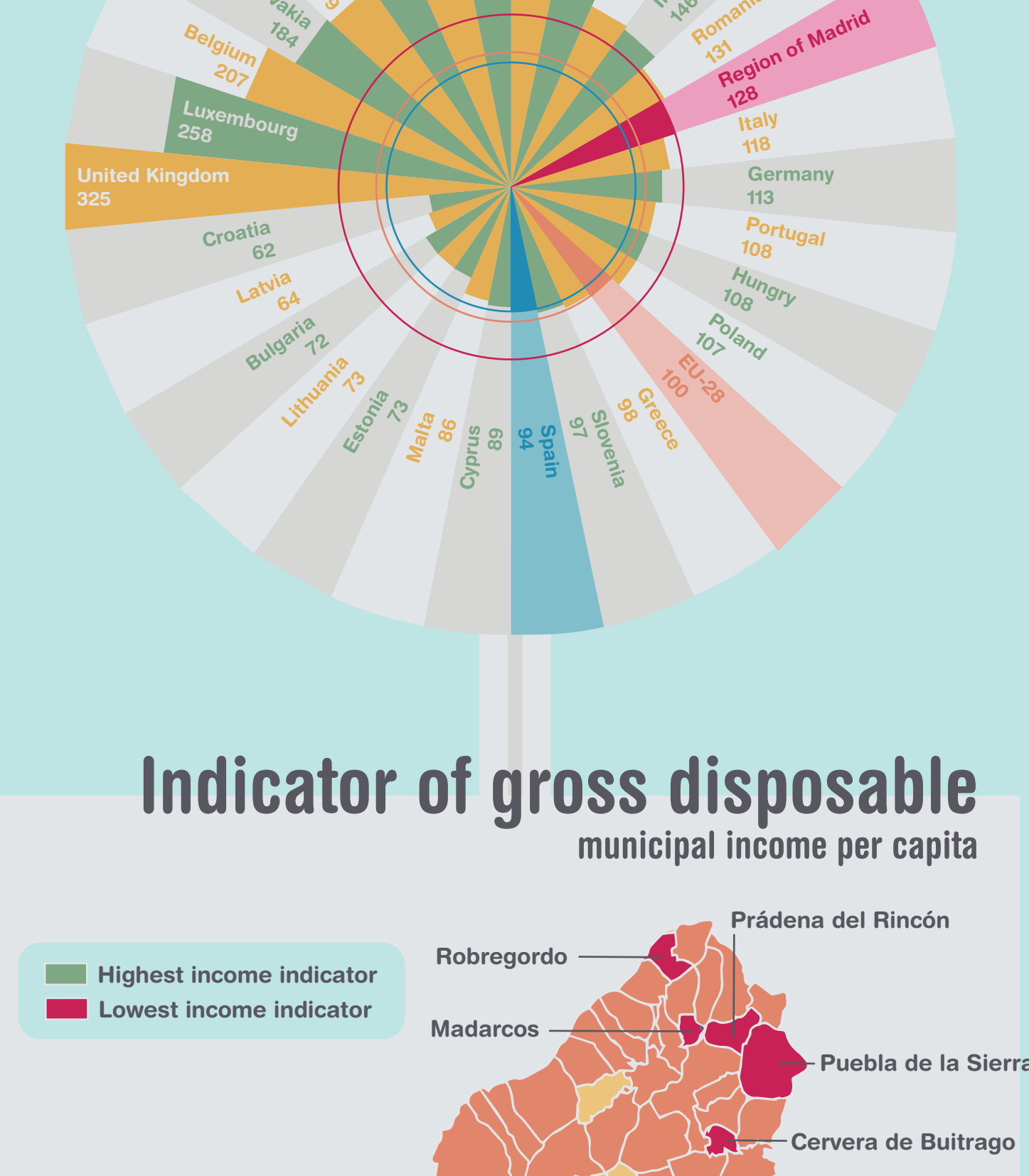


Region of Madrid

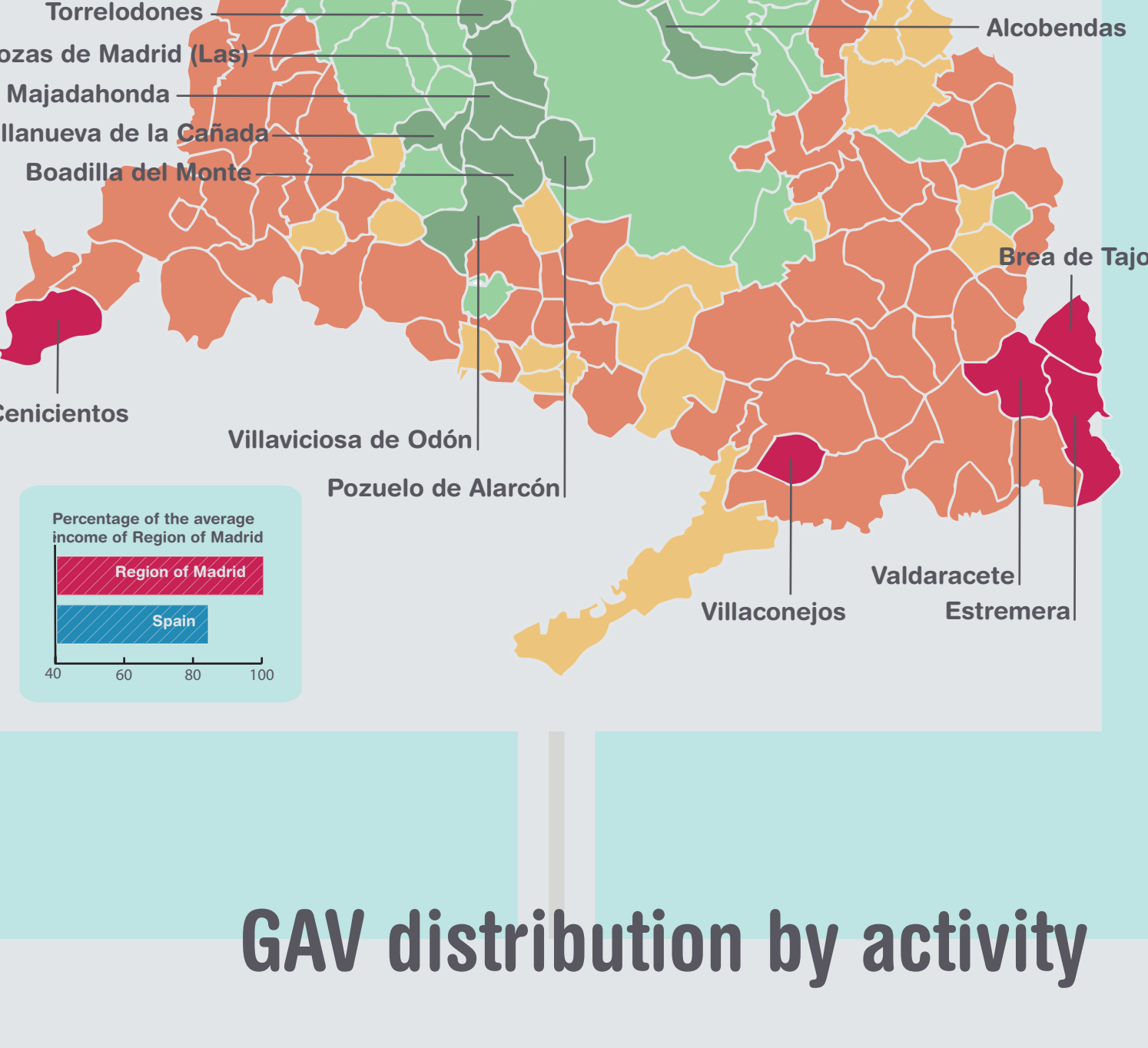
MADRID'S ECONOMIC OUTLOOK 2015

GDP per cápita

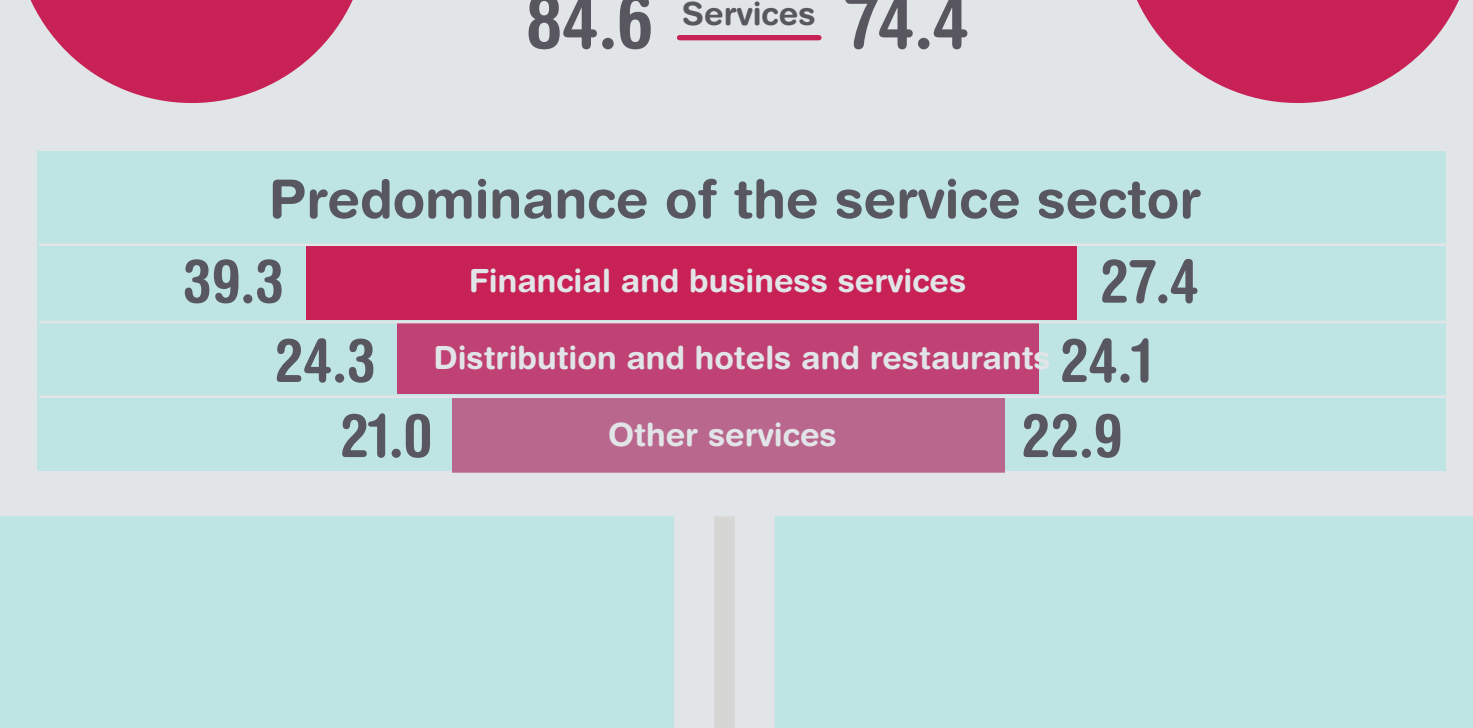
in PPS UE28=100
Each country represents the European region containing the capital city.



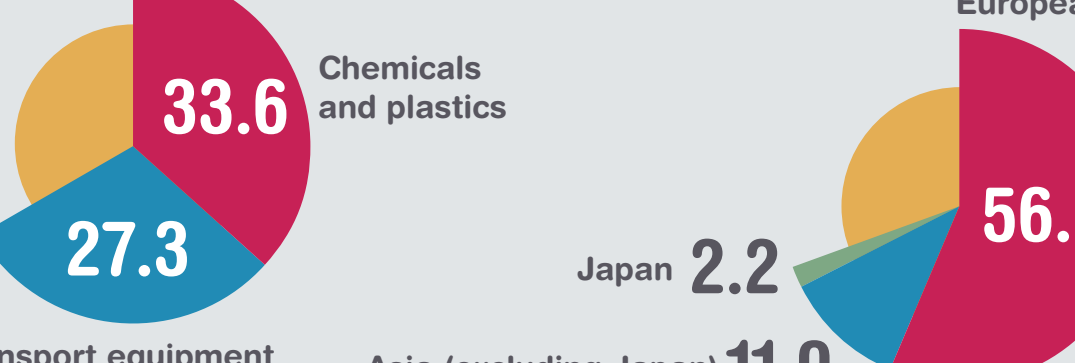
Indicator of gross disposable municipal income per capita



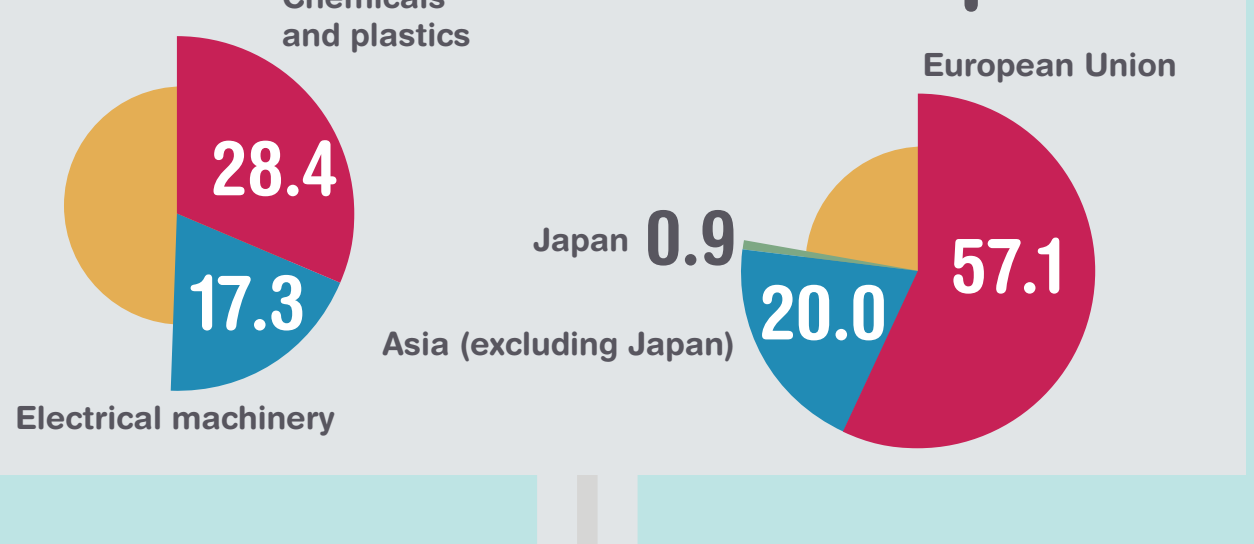
GAV distribution by activity



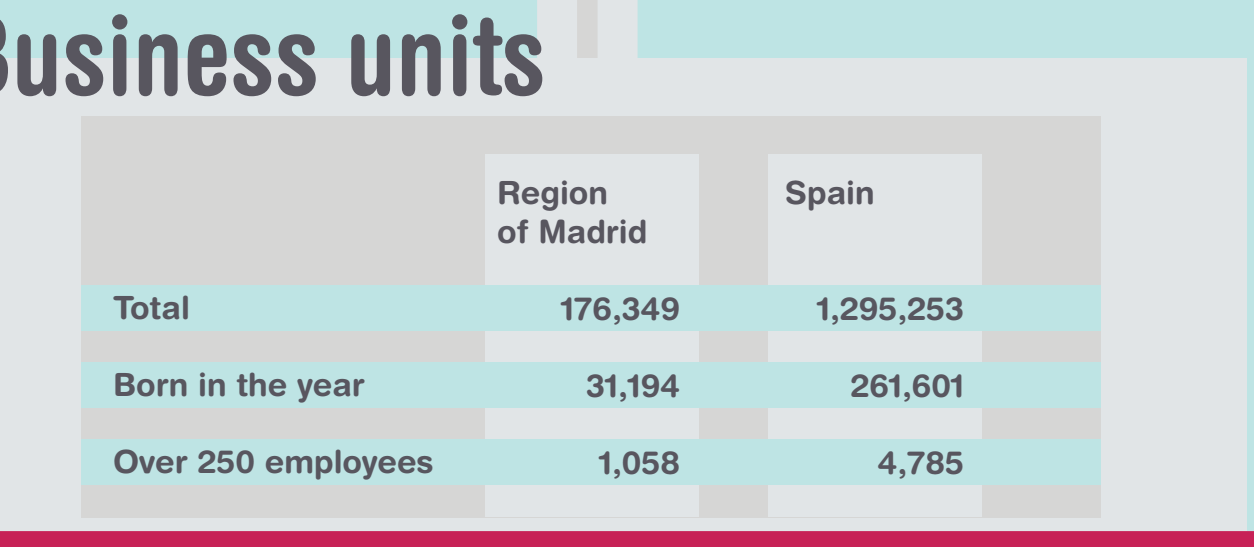
Predominance of the service sector



Exports



Imports



Business units

	Region of Madrid	Spain
Total	176,349	1,295,253
Born in the year	31,194	261,601
Over 250 employees	1,058	4,785

Madrid-based companies have a life expectancy at birth of 6.92 years, although their life expectancy reaches 12.77 years if the company remains in business for ten years.

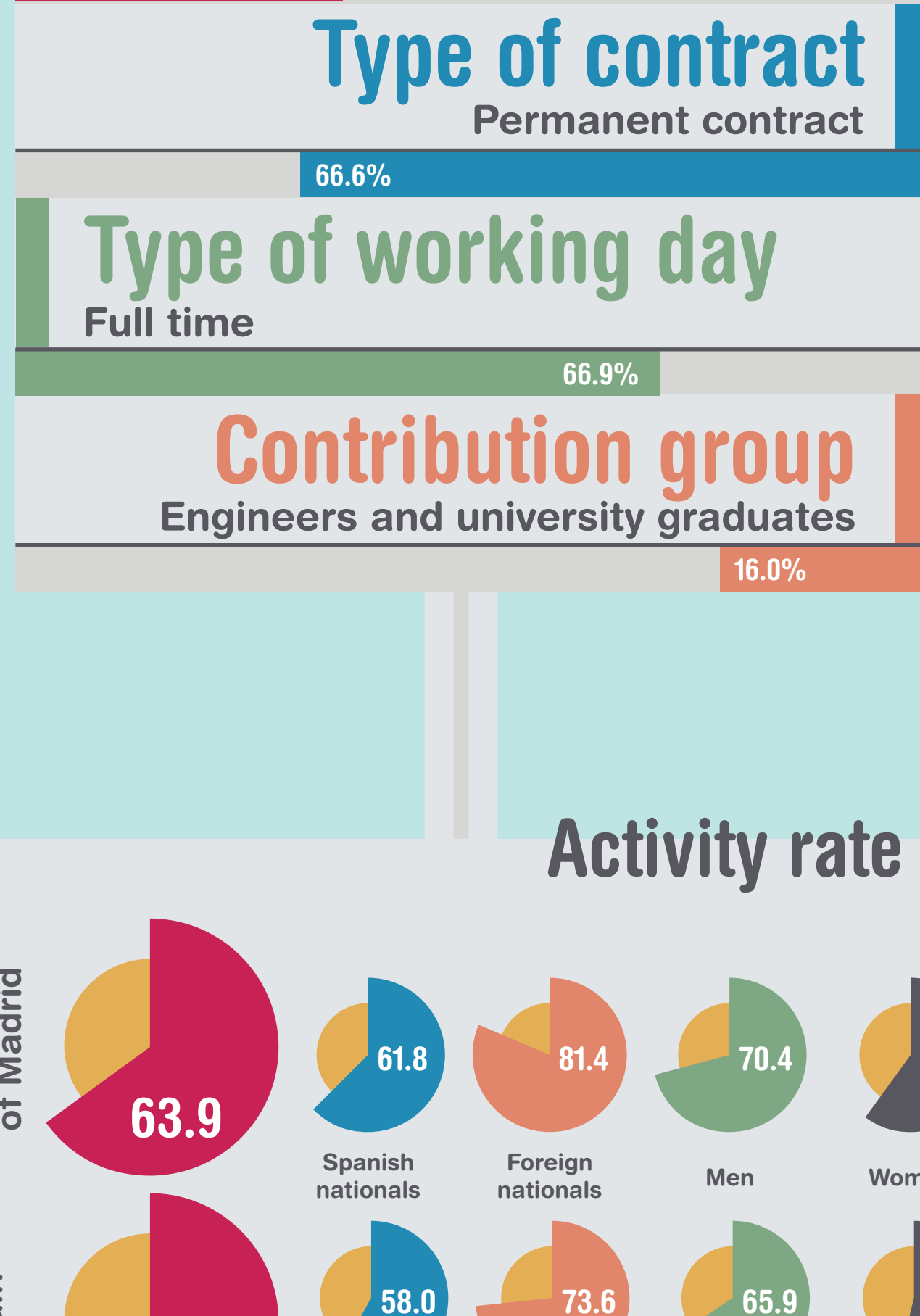
Madrid Metro Network

is the second largest in Western Europe, only exceeded by the London Underground system, and followed by the Paris Metro

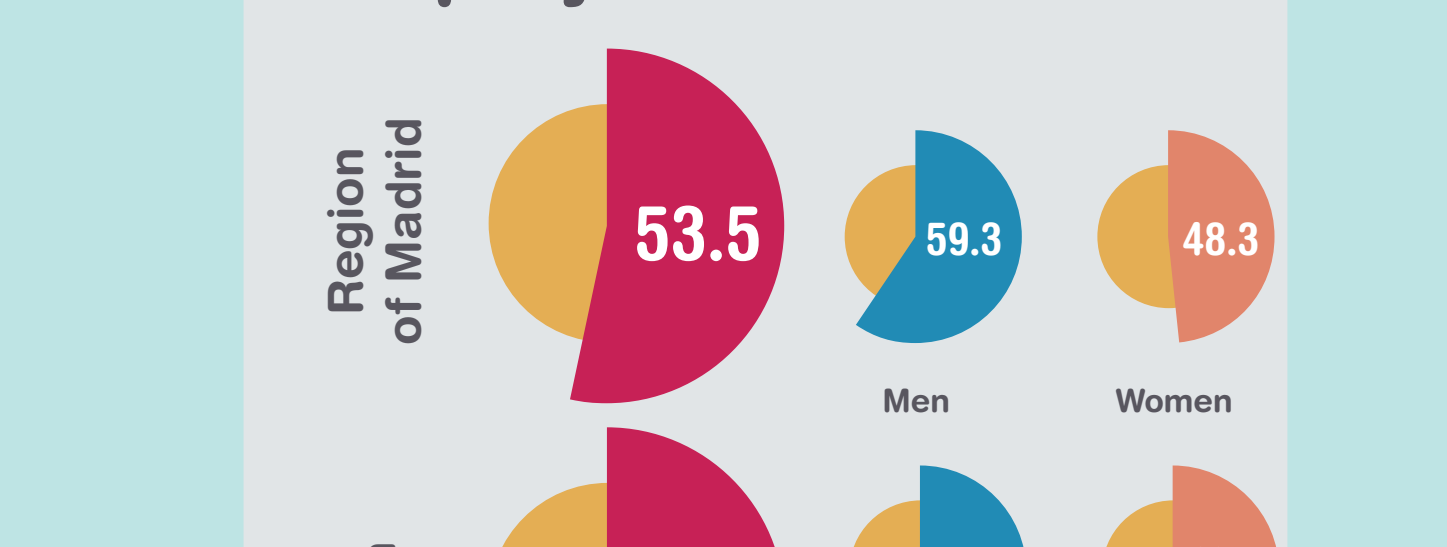
Road network (km)

Category	Region of Madrid	Spain
HIGH CAPACITY ROADS (Total: 989)		
Toll motorways	161	
Toll-free motorways & highways	616	
Dual carriageways	212	
REST OF THE NETWORK (Total: 2,352)		
Less than 5m wide		71
5 to 7m wide		812
More than 7m wide		1,468

Profile of average affiliated person



Activity rate

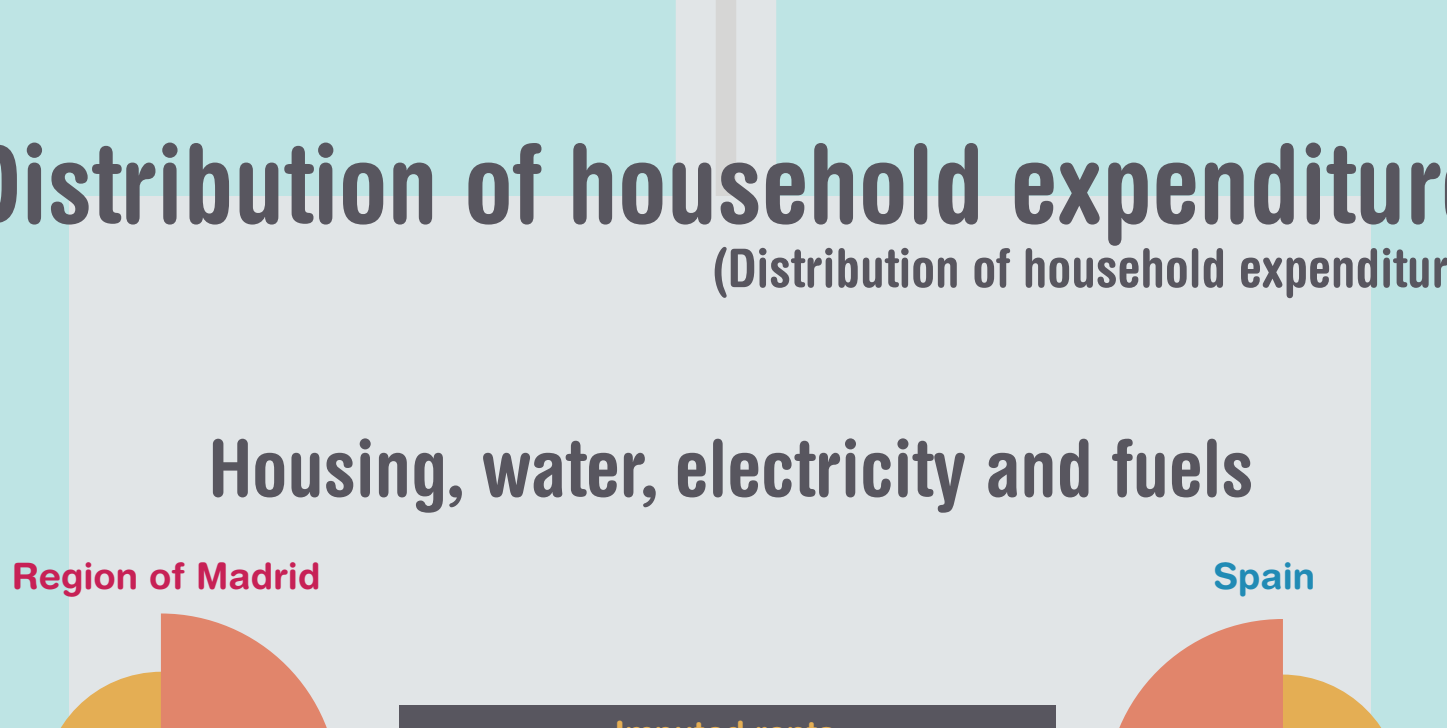


Employment rate



The percentage of households with all active members employed is 76.6% (Spain 70.8%).

Unemployment rate



The percentage of households with all active members unemployed is 7.9% (Spain 11.8%).

Distribution of household expenditure (Distribution of household expenditure)

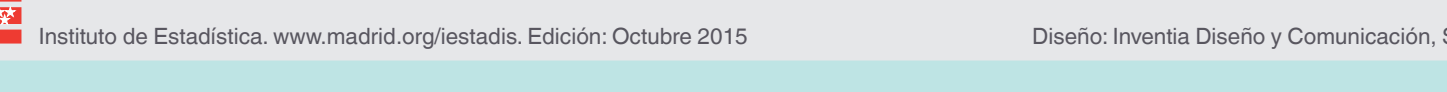
Housing, water, electricity and fuels



Food and non-alcoholic beverages



Transport



Hotels, cafes and restaurants

Comunidad de Madrid
CONSEJERÍA DE ECONOMÍA, EMPLEO Y HACIENDA
Dirección General de Economía y Política Financiera