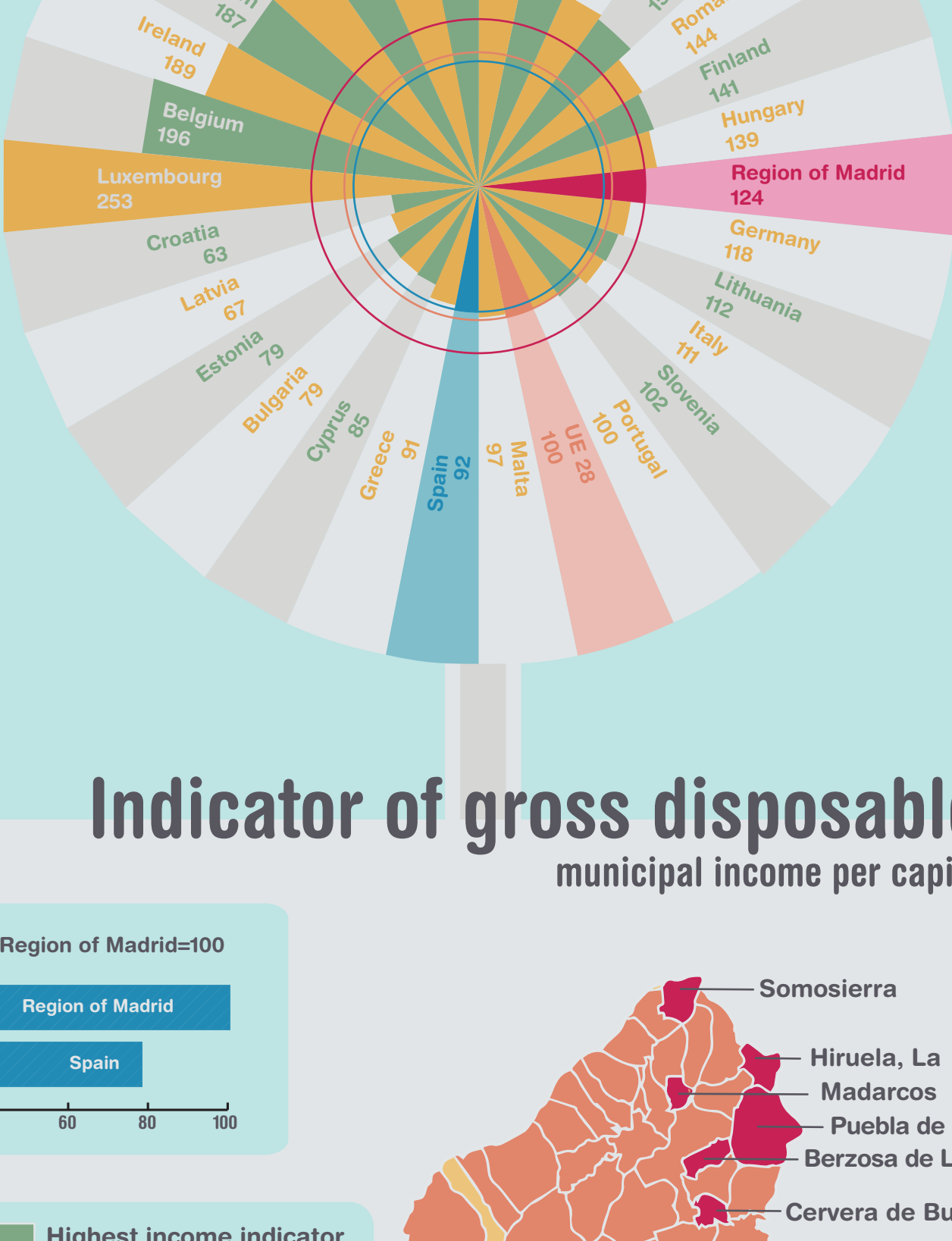


# Region of Madrid

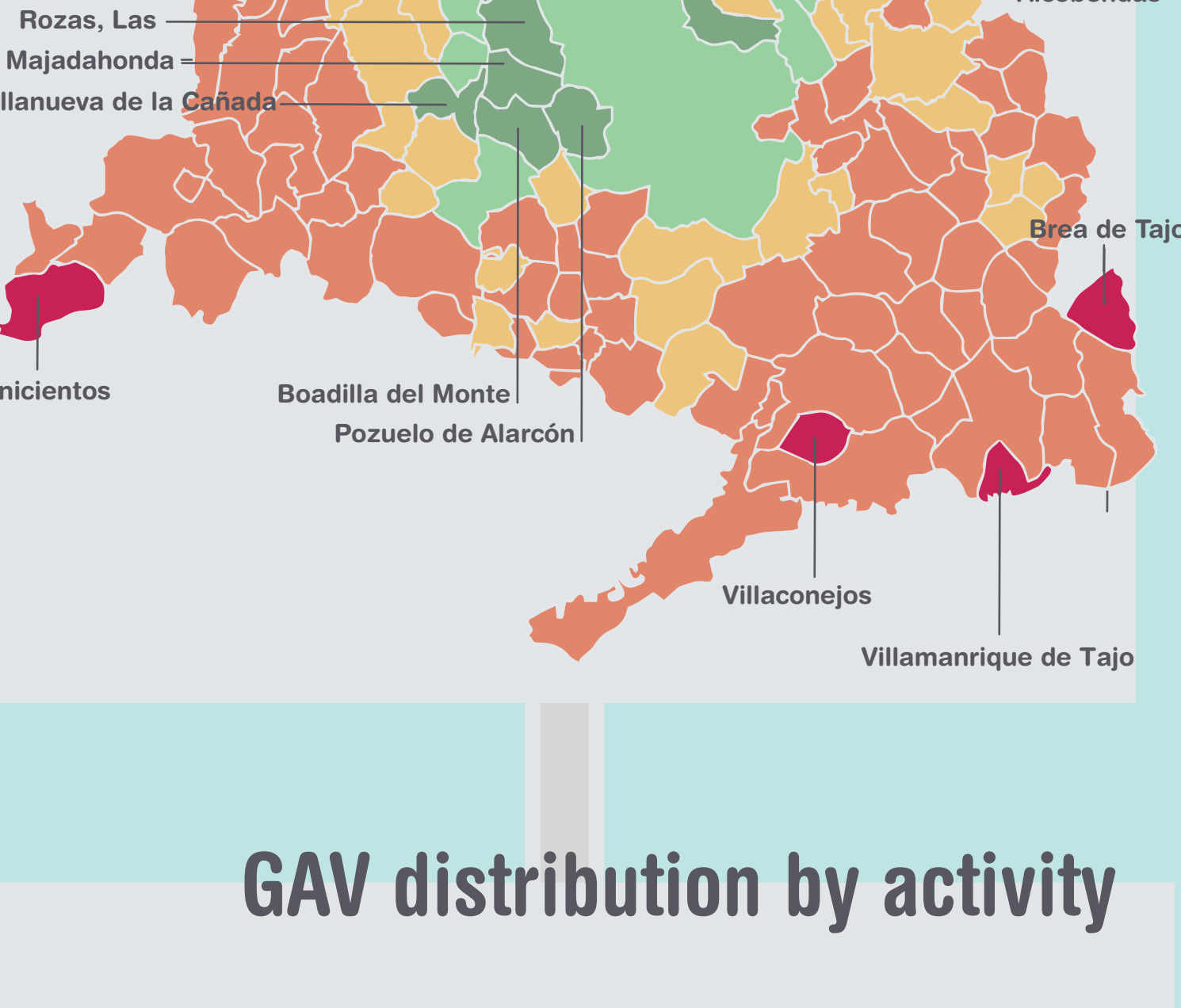
## MADRID'S ECONOMIC OUTLOOK 2019

### GDP per capita

in PPS UE28=100  
Each country represents the European region containing the capital city.



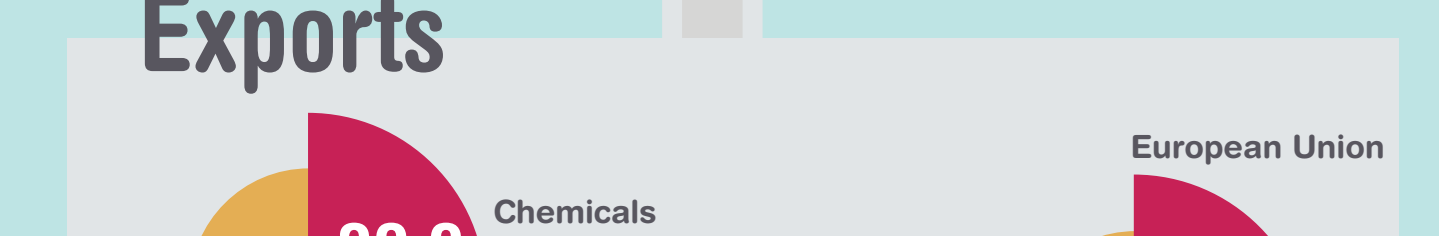
### Indicator of gross disposable municipal income per capita



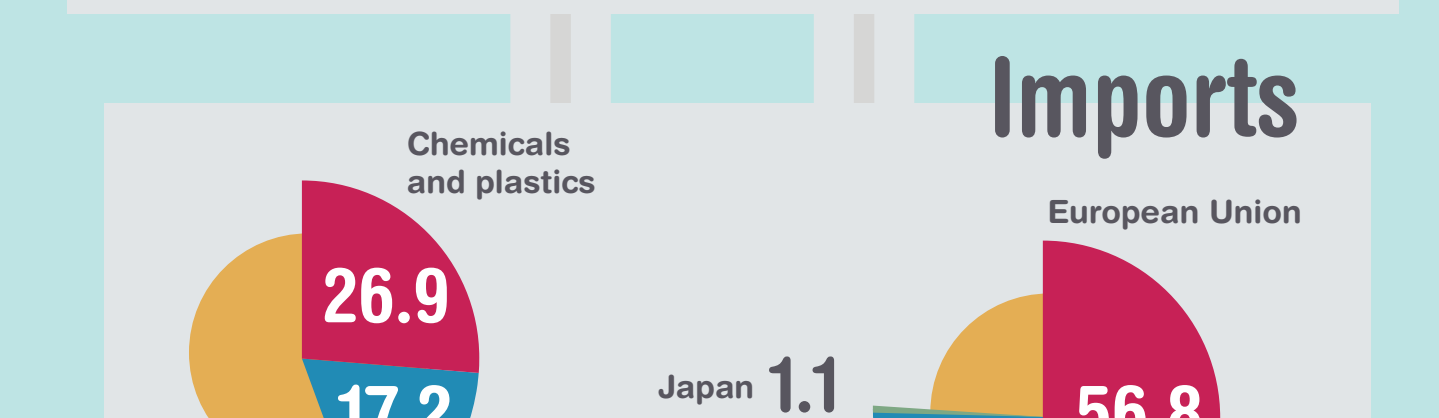
### GAV distribution by activity



#### Predominance of the service sector



### Exports



### Imports



### Business units

	Region of Madrid	Spain
Total	189,941	1,375,817
Born in the year	29,959	242,295
Over 250 employees	1,270	5,753

Madrid-based companies have a life expectancy at birth of 8.6 years, although their life expectancy reaches 16.8 years if the company remains in business for ten years.

### Madrid Metro Network

is the second largest in Western Europe, 288.5 km. (292 stations)

only exceeded by the London Underground system, and followed by the Paris Metro

### Road network (km)

HIGH CAPACITY ROADS		978	REST OF THE NETWORK		2,331
Toll motorways	161		Less than 5m wide	67	
Toll-free motorways & highways	605		5 to 7m wide	812	
Dual carriageways	212		More than 7m wide	1,452	

### Profile of average affiliated person

#### Sex

Male

52.2%

#### Age

40 to 44 years old

15.7%

#### Nacionality

Spanish

86.0%

#### Workplace

Firms with more than 250 workers

35.4%

#### Firm's branch of activity

Financial and business services

31.8%

#### Type of contract

Permanent contract

66.4%

#### Type of working day

Full time

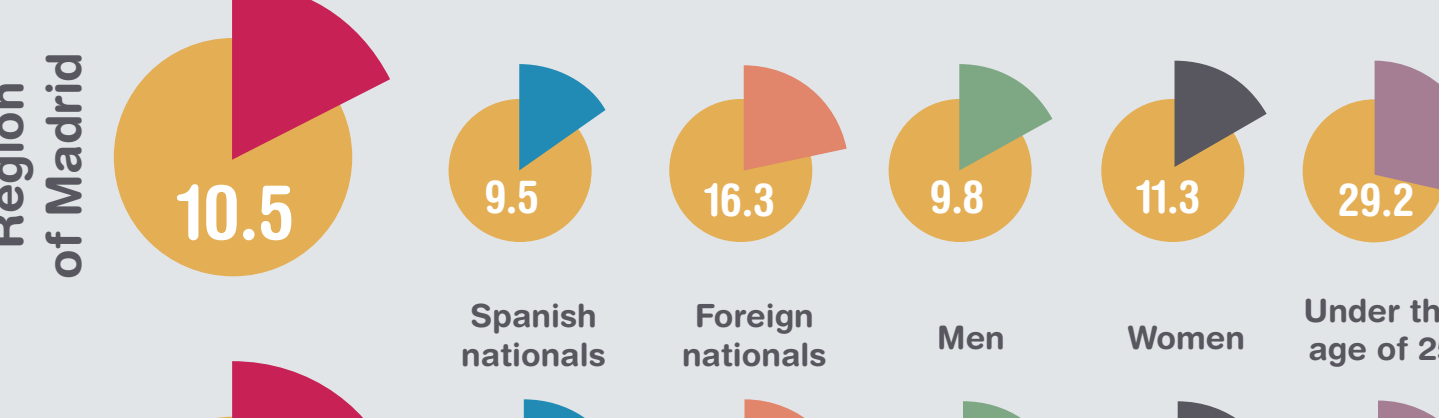
67.7%

#### Contribution group

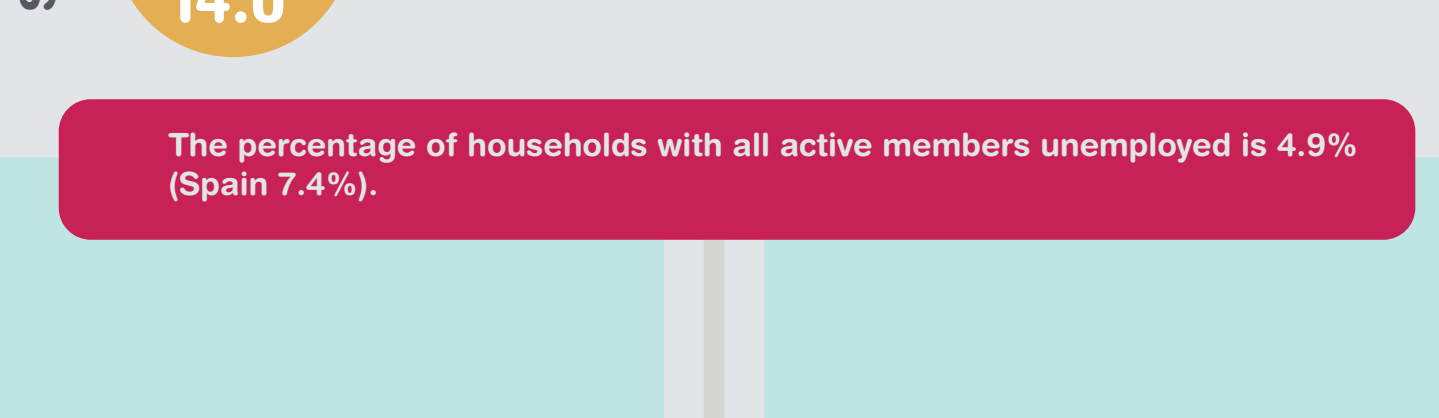
Engineers and university graduates

16.9%

### Activity rate

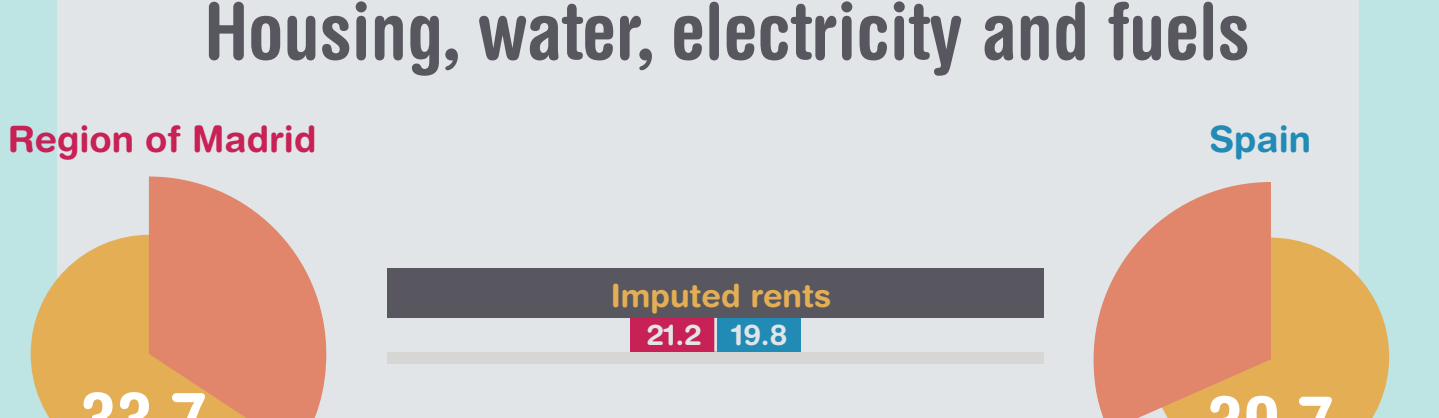


### Employment rate



The percentage of households with all active members employed is 83.7% (Spain 79.4%).

### Unemployment rate



The percentage of households with all active members unemployed is 4.9% (Spain 7.4%).

### Distribution of household expenditure (Distribution of household expenditure)

#### Housing, water, electricity and fuels



#### Transport



#### Food and non-alcoholic beverages



#### Restaurants and Hotels



Comunidad de Madrid