



MADRID

NATURE DESTINATION



MADRID IS CULTURE, ART AND SHOWS, SHOPPING, FINE DINING AND OENOLOGY.

HOW EVER MADRID IS ALSO NATURE

It is a region of scenic contrasts, biodiversity and natural spaces of great ecological interest, with conditions that are ideal for enjoying outdoor activities.

MADRID HAS THE LOT, JUST ONE HOUR FROM THE AIRPORT

ENJOY

THE REGION'S NATURAL DIVERSITY ENABLES A GREAT VARIETY OF LEISURE AND SPORTS ACTIVITIES IN NATURAL SETTINGS.

THE REGION OF MADRID BOASTS THE IDEAL CONDITIONS TO PRACTICE OUTDOOR ACTIVITIES VERY CLOSE TO THE CITY OF MADRID:

SUITABLE CLIMATIC CONDITIONS:

Few days of rainfall, many hours of sun per year and an average annual temperate of 14.6°.

VARIED OROGRAPHY:

Mountains, valleys, rivers... enabling you to enjoy a wealth of activities.

VALUABLE NATURAL ENVIRONMENT AND BIODIVERSITY

MODERN TRANSPORT FACILITIES:

Airport, Metro network, regional trains and buses that perfectly cover connection requirements across the whole of the region.

RICH HISTORICAL AND CULTURAL HERITAGE:

3 Heritage of Humanity sites, 4 world-famous museums and an important cultural agenda throughout the year.

EXCELLENT GASTRONOMIC OFFER:

Variety of restaurants, quality raw material, local produce, etc.

WELCOMING AND OPEN PEOPLE WHO WILL MAKE YOUR STAY UNFORGETTABLE.

**39,9% OF THE
TERRITORY OF
MADRID IS FORMED
OF NATURAL
PROTECTED AREAS**

**SIERRA DE GUADARRAMA
NATIONAL PARK**



BIOSPHERE RESERVES
**MANZANARES
HIGH RIVER BASIN
RINCÓN SIERRA**

NATURE RESERVE
EL REGAJAL-MAR DE ONTÍGOLA

WOOD SITE OF NATURAL INTEREST
MONTEJO DE LA SIERRA BEECH

REGIONAL PARKS
SURESTE REGIONAL PARK
MANZANARES HIGH RIVER BASIN REGIONAL PARK
**MIDDLE COURSE OF THE GUADARRAMA RIVER
REGIONAL PARK**

HENARES GROVE

SAN JUAN LAGOON

SAN JUAN LAGOON FAUNA REFUGE

ARCIPRESTE DE HITA CRAG



DISCOVER

Located only 45 minutes away from Madrid, **Sierra de Guadarrama** is a region of great natural beauty and landscape boasting exceptional biodiversity and ecological richness, an incomparable setting for enjoying nature, playing sports, observing the surroundings or just relaxing.

SIERRA DE GUADARRAMA NATIONAL PARK

NATURAL VALUES

SIERRA DE GUADARRAMA NATIONAL PARK

WOODLAND BIODIVERSITY

PROMINENT PRESENCE OF SCOT PINE, PYRENEAN OAK FORESTS AND JUNIPER ON THE SUMMITS. THE PRESENCE OF HIGH ALTITUDE GRASSLAND AND BUSHES.



Juniper

Pyrenean Oak

Scots Pine

WILDLIFE

HIGHLIGHTS AMONG THE SPECIES ARE CINEREOUS VULTURE, GOLDEN EAGLE, BLACK STORK, PEREGRINE FALCON, SPANISH IMPERIAL EAGLE, EURASIAN EAGLE-OWL, NORTHERN GOSHAWK, EUROPEAN OTTER, RED FOX, IBERIAN WOLF, WILD CAT, SPANISH IBEX, BROWN TROUT, EUROPEAN POND TORTOISE, IBERIAN ROCK LIZARD, EUROPEAN TREE FROG AND SPANISH MOON MOTH.



Golden Eagle



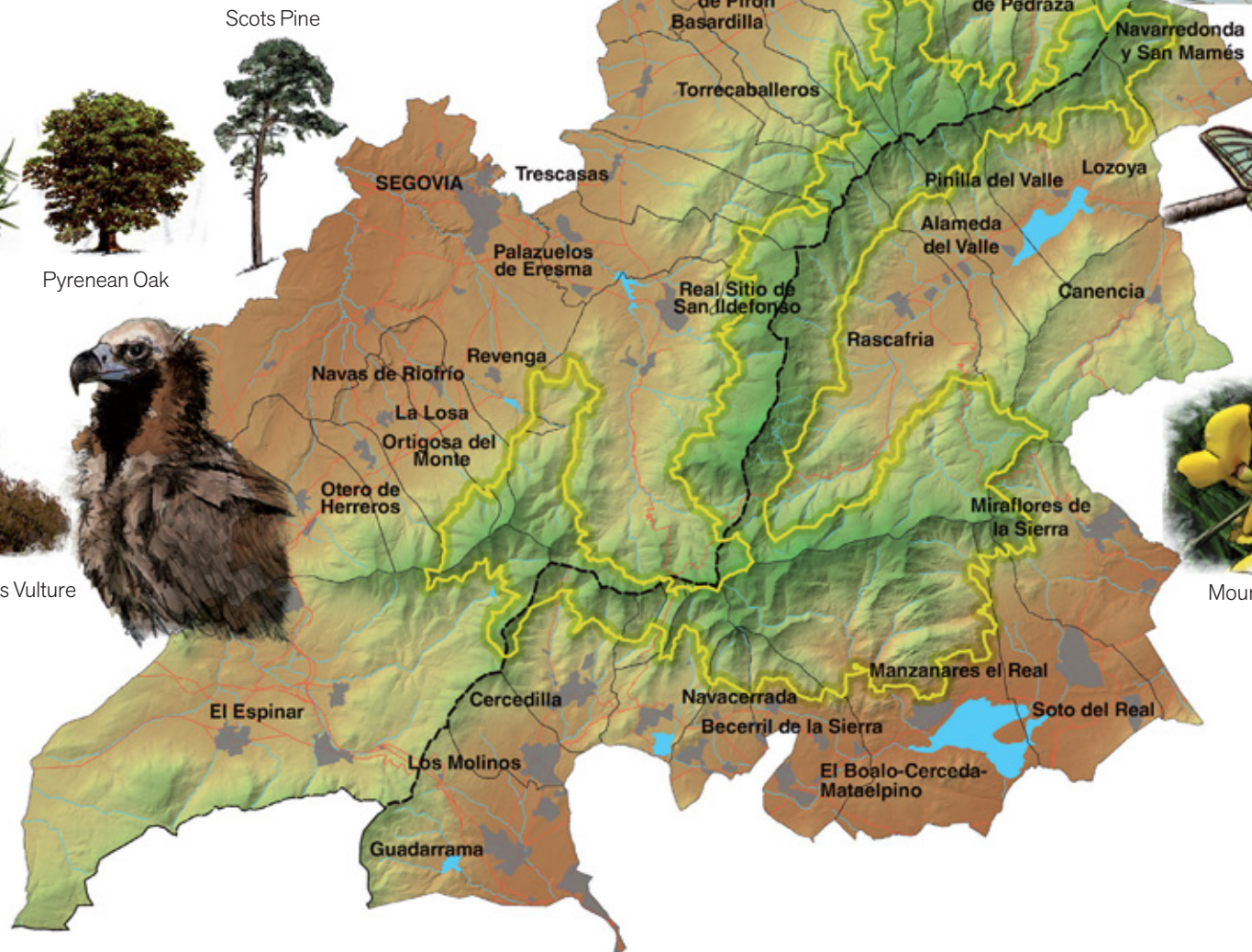
Cinereous Vulture



Iberian Wolf

Great Tit

Spanish Ibex



Spanish Moon Moth



Mountain broom

THE NATIONAL PARK EXTENDS ONTO TWO AUTONOMOUS REGIONS: MADRID AND CASTILLA Y LEÓN, COVERING 33,960 HA. THE PEÑALARA PEAK IS THE HIGHEST SUMMIT IN THE MOUNTAIN RANGE.

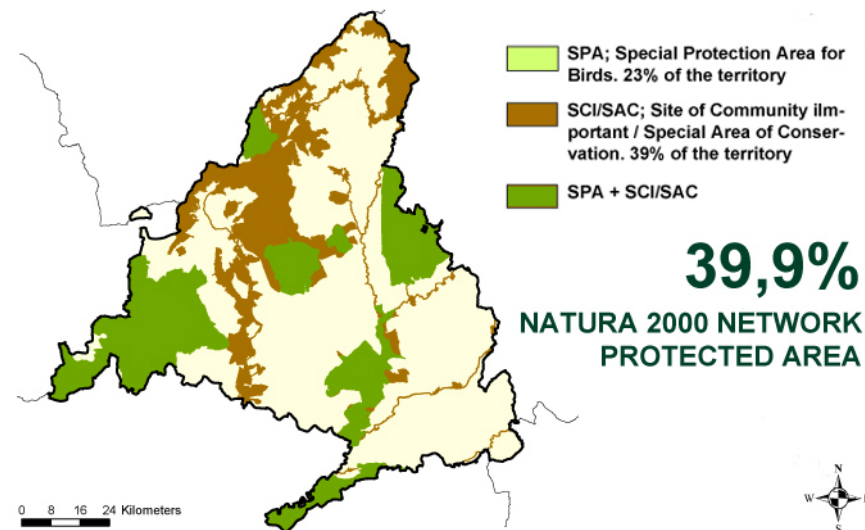
BIRDWATCHING IN MADRID

THE REGION OF MADRID HAS AN IMPORTANT ORNITHOLOGICAL HERITAGE THANKS TO ITS HUGE DIVERSITY OF ECOSYSTEMS AND HABITATS (HIGH MOUNTAIN, PINE GROVES, FIELDS, PASTURES AND RIVERSIDE WOODS.



THE PRESENCE OF NEARLY 240 BIRD SPECIES (OF THE APPROXIMATELY 400 IN SPAIN); WITH KEY SPECIES SUCH AS THE IMPERIAL EAGLE AND THE BLACK VULTURE; AND THE RECENTLY DECLARED SIERRA DE GUDARRAMA NATIONAL PARK, GIVE THE REGION HUGE POTENTIAL AS A QUALITY BIRDWATCHING DESTINATION.

BIRDWATCHING IS AN ACROSS-THE-BOARD TOURIST RESOURCE RELATED TO ALL NATURE TOURISM PROGRAMMES AND WILL BE ROLLED OUT VIA AN ORNITHOLOGICAL TOURISM CLUB.



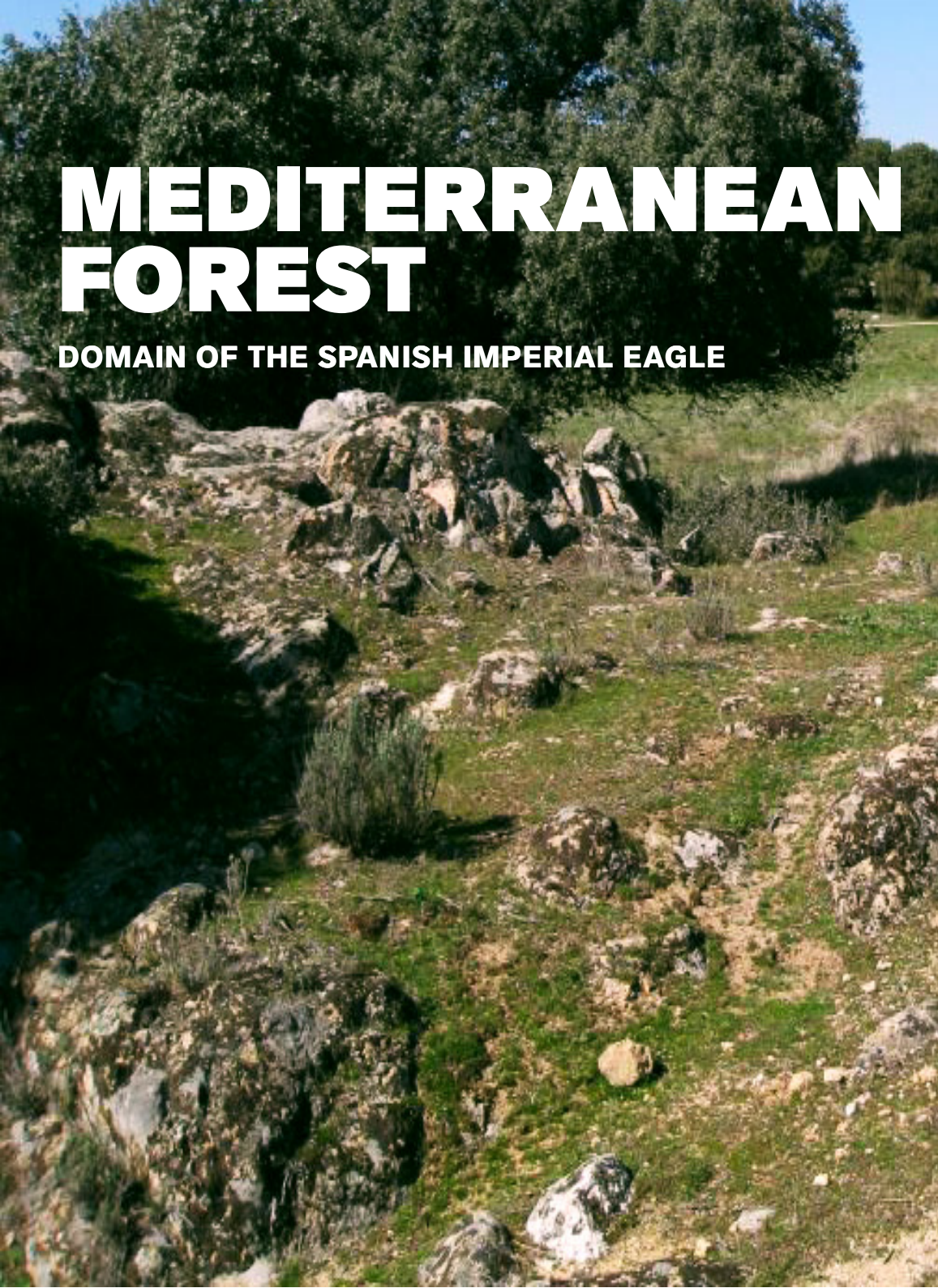
APP. ORNIVÍAS



MADRID
Region of Madrid **SPAIN**

MEDITERRANEAN FOREST

DOMAIN OF THE SPANISH IMPERIAL EAGLE



© Juan Varela

ONE OF THE MOST EMBLEMATIC HABITATS OF THE IBERIAN PENINSULA HOLDING UNIQUE SPECIES OF EUROPEAN NATURE.

In Madrid this habitat can be observed and enjoyed by everyone who would like to visit any corner of the vast areas that this habitat covers in the region. Here we discover one of the best and well preserved breeding grounds for the Spanish Imperial Eagle. Despite being one of the most endangered species in the planet, nesting pairs are present just a few kilometers away from the city center.

In addition to the Spanish Imperial Eagle, Madrid offers very good chances for the birdwatcher to watch some of the most emblematic species in the Mediterranean woodlands: Black Stork, Booted Eagle, Black and Red Kites, Red-necked Nightjar, Eurasian Eagle-Owl, Eurasian Scops-Owl, Red-rumped Swallow, European Bee-eater, Iberian / Azure-winged Magpie and Sardinian Warbler among other species in a unique landscape.

SIERRA OESTE

Includes Natura2000 protected sites (SCIs: Sites of Community Importance and SPAs: Special Protection Areas for Wild Birds) characterize by rugged hills covered with oaks, extensive “dehesa” plains and crags.

Suggested visit: In the foothills of Cerro Valdenoches along the San Juan’s Bridge path.

METROPOLITAN AREA

The proximity of Monte del Pardo and Soto de Viñuelas to the capital allows the visitor to take pleasure of some of these Mediterranean bird treasures in just a 15 minute drive from the city center.

Suggested visit: El Soto de Viñuelas.

MOUNTAIN

LOOKING FOR THE BLUETHROAT



© Juan Varela

WITH PEAKS OVER 2.000 METERS (6.500 FEET) ABOVE SEA LEVEL, ROCKY SUMMITS, AND SLOPES COVERED BY EXTENSIVE SCOT PINE AND PYRENEAN OAKS FORESTS, THE SIERRA DE GUADARRAMA AND SIERRA NORTE ARE PLACES OF UNIQUE AND RUGGED BEAUTY.

In spring, after the snow has melted and above the growth limit of trees where mountain pastures appear, is where we discover the beautiful Bluethroat habitat and when we can observe the display and contests of Bluethroat males fighting for a place to breed from the top of the golden-flowered broom bushes.

These mountain areas are the home of a great number of unique bird species, such as Common Rock-Thrush, Water Pipit or Citril Finch, some of which choose the highest locations covered with grass and crags, while others like European Crested Tit and Western Bonelli's Warbler opt for forested parts. Raptors are also well represented here, with highlights including Cinereous Vulture, Griffon Vulture, Golden Eagle, Booted Eagle and Red Kite, among others.

SIERRA DE GUADARRAMA

High peaks, dense forest and deep valleys comprises this territory where the biggest colony of Cinereous Vulture breeds in the region.

Suggested Route: From Monte Abantos to Reyezuelo.

SIERRA NORTE

Mountain ridge and cattle countryside produce a landscape where one of the southernmost Beech forests in Europe and picturesque villages are located.

Suggested Route: Path through the beech forest.

HIGH COURSE OF MANZANARES RIVER

One of the most spectacular and singular areas of scenery in Madrid can be found in "La Pedriza". Enormous granite blocks of bare stone rise in incredible forms giving the place an unreal appearance.

Suggested Route: Go upriver along the Manzanares through the Camorza Gorge.

STEPPE

WINGED GIANTS OF THE PLAIN

THE STEPPES AND CEREAL FIELDS ARE ONE OF THE MOST CHARACTERISTIC SPANISH ECOSYSTEMS. THIS IS WHY THIS COUNTRY HOLDS THE BEST POPULATIONS OF STEPPE LAND BIRDS IN WESTERN EUROPE.

Cereal fields and bushy steppe occupies vast areas in the East and South of the Madrid Region. On these wide cultivated plains where big flocks of Great Bustards find the place to bring up their young. One of the best times to visit is when the courtship takes place during the spring. Tens of males perform a spectacular courtship display, one of the greatest

ornithological spectacles that should be seen at least once in a lifetime.

Those same fields where the Great Bustards thrive are home to other species equally adapted to this tough environment. Birds like Montagu's Harrier, Lesser Kestrel, Little Bustard, Black-bellied and Pin-tailed Sandgrouse, Calandra, Crested, Thekla and Greater Short-toed Larks populate open areas of the region. Some of the areas covered with low shrubs or small crags are good places to look for the Dartford Warbler or even the curious Black Wheatear.

JARAMA AND HENARES RIVER PLAINS

A landscape modelled with gentle relief where the best Great Bustard populations can be found through the year.

Suggested Route: Itinerary between Valdetorres del Jarama and Talamanca del Jarama.

MIDDLE COURSE OF THE GUADARRAMA RIVER

The region of La Sagra south of Madrid is an excellent place for "steppe" birdwatching. Some of the specialties are Black-bellied and Pin-tailed Sandgrouse, Little Bustard and various lark species.

Suggested Route: La Sagra madrileña.

ALCARRIA MADRILEÑA

A territory holding vines, olive orchards and cereal fields as well as natural vegetation. Populated by a diverse community of birds this area is a birdwatchers "must see" choice.

Suggested Route: Pozuelo del Rey badlands.



NATURAL LAKES IN MADRID ARE VERY SCARCE BUT THE RECOVERY OF GRAVEL PITS HAS RESULTED INTO A LARGE NUMBER OF ARTIFICIAL LAKES ALL OVER THE COMMUNITY OF MADRID TERRITORY THAT HAS BEEN RAPIDLY OCCUPIED BY AN IMPORTANT NUMBER OF WATERFOWL.

Thanks to their continuous water contribution, rivers are considered biodiversity shelters through territories under severe summer drought.

It is among the dense marsh vegetation of lakes and gravel pits where a singular bird appears, the Purple Swamphen; its spectacular metallic bluish body contrasts with its blood-red beak and robust legs.

In the trees and bushes that surrounds rivers and lakes is quite frequent to find the Eurasian Penduline Tit among a rich group of species that prosper on this kind of habitat. Lakes and marshes are home as well to the Little Bittern, Western Marsh Harrier, Great Crested Grebe, Black-necked Grebe and Great Reed Warbler. Among waterfowl it is quite frequent to find Northern Shoveler, Mallard, Red-crested Pochard, Tufted Duck and the Ferruginous Duck is an occasional visitor to these environments on some of the wetlands in the region.



© Juan Varela

WETLANDS AND RIVERBANKS

A BLUE SPOT IN THE RIVERBANK

SOUTHEAST

This area of Madrid presents a great variety of habitats some of which are considered the best and well preserved wetlands in the Community of Madrid such as the Mar de Ontígola quite close to the city of Aranjuez, Laguna de San Juan near Chinchón and the gravel pits between the rivers Jarama, Manzanares & Henares (Soto de las Juntas and El Campillo).

Suggested Route: The Mastodont Path (La senda del Mastodonte)

URBAN BIRDING (URBAN PARKS)

TREES HIDING A WORLD OF WILDLIFE

THE CITIES IN THE COMMUNITY OF MADRID COUNT WITH BEAUTIFUL AND ON OCCASIONS BIG URBAN PARKS, WITH SOME OF THEM HISTORIC LANDMARKS AS WELL, SUCH AS THE ONES WE CAN FIND IN MADRID, ARANJUEZ AND EL ESCORIAL.

Estos parques constituyen, además de un lugar de recreo y ocio para la poblaThese parks, in addition to being great places for recreation and leisure for the local population and tourists, are a place where wild birds find a place to breed, winter or thrive inside the city. Some of the typical species we find here are Short-toed Treecreeper, a wide variety of tit species (Great, Blue, Coal, European Crested) amongst others.

It is not strange to find some smaller raptors such as Northern Goshawk, Eurasian Sparrowhawk, Common Kestrel and some nocturnal species such as Little Owl and Eurasian Scops Owl. These birds of prey take advantage of the big communities and diversity of birds that inhabit this urban ecosystem. Additionally, if the park counts with small ponds or lakes, these areas are frequently used by waterfowl that seize the chance of abundant food.

Surprisingly, we could find more than 40 species in just an early morning walk in these oases of nature in the middle of the cities.



© Juan Varela

METROPOLITAN AREA

The city of Madrid is enriched by numerous urban parks where visitors can relax and walk below the trees while they enjoy a morning's or afternoon's birdwatching. The Retiro park, Parque del Oeste or Casa de Campo are excellent options in the city centre, but are not unique to the big city. In some other areas of Madrid and even some other cities we can find equally suitable and beautiful places to enjoy birdwatching in Madrid's urban areas.

Suggested Route: The Birds' Park

RASCAFRÍA,
LA CABRERA,
CUENCA DEL LOZOYA,
EL ATAZAR AND
TERRELAGUNA ARE JUST
SOME OF THE RURAL
DESTINATIONS FOUND
IN THIS AREA

SIERRA NORTE

Sierra Norte is one of the most beautiful places in the Region of Madrid. Nature makes its presence felt in each of the 42 towns and in every corner of the mountain, thanks to the abundance of water and vast variety of plant and animal species that make this province a paradise. Particularly stunning are:

RINCÓN SIERRA. BIOSPHERE RESERVE

Declared a UNESCO site in 2005 thanks to its good state of conservation and natural wealth. Oak, pine and beech woods, together with diverse fauna, make it a unique space in Madrid.

MONTEJO BEECH WOOD

The Montejo Beech Wood is one of the most southerly woods of its kind in Europe. Also distinguished by its charm is the well-known Genaro Trail that skirts the Atazar Reservoir.

SIERRA NORTE DE INTERIOR NAUTICAL STATION

Five reservoirs covering an important part of the territory - the Pinilla, Riosequillo, Puentes Viejas, Villar and El Atazar - together with recreational, museum, nature areas and more, make Sierra Norte a singular place with major tourism and sports possibilities.

TRANSLOZOYA

The Sierra Norte de Madrid tourist train which links Chamartín station in Madrid with the main towns of tourist interest in Sierra Norte.

These important characteristics, along with the enormous rural tourism offer, have made this province a tourist landmark in the Region. Sierra Norte has **more than 60% of the rural tourism establishments in the whole of region**. They include houses made from stone and wood, straw lofts turned into accommodation, small hotels with charm and a wealth of possibilities.

DISCOVER



DISCOVER SIERRA DE GUADARRAMA

THE SIERRA GUADARRAMA IS A REGION WITH INCREDIBLE NATURAL AND PANORAMIC VALUES BESIDES SUPPORTING A RICH BIODIVERSITY AND ECOLOGICAL WEALTH. AN EXCEPTIONAL PLACE TO ENJOY NATURE THROUGH BIRDWATCHING.



SIERRA DE GUADARRAMA NATIONAL PARK

Hold species such as Cinereous Vulture, Spanish Imperial Eagle, Spanish Ibex and Spanish Moon Moth.

MANZANARES HIGH COURSE REGIONAL PARK

A significant part has been included in the recent Sierra de Guadarrama National Park. It was the first Regional Park declared in Spain and is also a Biosphere Reserve and SCI (Sites of Community Importance in the EU).

CULTURAL INTEREST ROUTES

The Sierra de Guadarrama hides in its villages, heritage jewels of great historical value, ancient bridges, roman roads, castles, chapels and churches. A quite walk through its villages helps you understand and enjoy the past and present of this region.

NATURAL ITINERARIES

Abundant marked tracks and trails allow access into the rugged nature of the region and discover its valleys, woodlands and mountains as well as its wildlife.

DISCOVER SIERRA OESTE

SIERRA OESTE IS CHARACTERISED BY ITS VARIETY OF LANDSCAPES, DIVERSITY OF ECOSYSTEMS, ITS FAUNA AND FLORA AND ITS PROTECTED NATURAL SPACES, AS WELL AS FOR THE CULTURAL WEALTH OF ITS TOWNS.



THE MUNICIPALITIES OF MADRID'S SIERRA OESTE ARE SITED ON MOUNTAIN SLOPES BETWEEN THE GUADARRAMA AND DE GREDOS SIERRAS. BUT THERE IS ONE ELEMENT DISTINGUISHED BY ITS ABUNDANCE - WATER. THE NUMEROUS STREAMS AND RIVERS EXPLAIN WHY THE MUNICIPALITIES ARE KNOWN AS THE WATER TOWNS.

The area has great tourist appeal, affording many possibilities of enjoying outdoor activities and the local cuisine:

NAUTICAL SPORTS AT THE SAN JUAN RESERVOIR: canoeing, diving, sailing, rowing and powerboat racing.

ORNITHOLOGICAL TOURISM is possible in the area as most of the territory is a Special Protection Area for wild birds, classified by the European Union (SPA Zone).

WINE ROUTES: Valle de las Iglesias and Legado del Císter



ENJOY AGRITOURISM

EXPERIENCES TO GAIN FIRST-HAND KNOWLEDGE ABOUT THE RURAL WAY OF LIFE AND DAILY ACTIVITY.

**MUSHROOM GATHERING IN RASCAFRÍA
DONKEY ROUTES
ORGANIC AGRICULTURE**

TRAVEL AGENCIES

SPAINBIRDS NATURE TOURS

TRAVEL AGENCY SPECIALIZED IN NATURE TOURISM SINCE 1999. COOPERATE WITH BIRD CONSERVATION. OFFERS TAILORED TOURS FOR GROUPS AND INDIVIDUAL TRAVELLERS, NATURE AND PHOTOGRAPHY ENTHUSIASTS. ITS TOURS OFFER IS RENEWED EVERY YEAR. COUNT WITH GUIDES WITH EXTENSIVE EXPERIENCE IN MADRID REGION'S WILDLIFE.

AETOS VIAJES

ON-LINE TRAVEL AGENCY. SINCE 2014 WORKS IN ECOTOURISM WITH THE SLOGAN "OUR DESTINY IS NOT ONLY A PLACE BUT A NEW WAY OF SEEING THINGS." OFFERS CUSTOM MADE TOURS FOR SMALL GROUPS (2-6 PEOPLE) AND IT IS OPEN FOR BIGGER GROUPS. SPECIALIZED AND EXPERT GUIDES IN NATURE INTEGRAL INTERPRETATION (GEOLOGY, WILDLIFE, HISTORY AND CULTURE) AND PARTICULARLY ON ORNITHOLOGY.

AMADABLAM AVENTURA

SPECIALIZED IN ACTIVE TOURISM AND ECOTOURISM. WORKS WITH EXPERT MOUNTAIN GUIDES, ENVIRONMENTAL EDUCATORS AND BIOLOGISTS. HAS A ZERO CO2 EMISSION POLICY AND COUNT WITH THE QUALITY STANDARD: SICTED SIERRA DE GUADARRAMA. OFFERS DIFFERENT GUIDED PROGRAMS TO WALK THE NATIONAL PARK OF SIERRA DE GUADARRAMA TO OBSERVE WILDLIFE, HISTORIC AND LITERARY LANDMARKS.

BIRDWATCHING GUIDES

IBERIAN WILDLIFE TOURS

JOHN MUDDAMAN, BRITISH, 36 YEARS LIVING IN SIERRA OESTE (MADRID) IN SPAIN AN IMMENSELY RICH RAPTORS REGION. BIRDS, DRAGONFLIES AND BUTTERFLIES EXPERT.

PROVIDES THE TRAVELER ONE OR TWO DAYS PROGRAMS, BESIDES CUSTOM MADE TOURS FOCUSED ON BIRDWATCHING, DRAGONFLIES AND BUTTERFLIES AS WELL AS INTEGRAL NATURE INTERPRETATION AND KNOWLEDGE OF CULTURE AND LOCAL POPULATION.

BIRDING TREKKING & NATURE

PROVIDES NATURE TRIPS OF DIVERSE DURATION FOR BIRDWATCHING, PLANTS IDENTIFICATION AND BUTTERFLIES OBSERVATION, BESIDES CUSTOM MADE TOURS DEPENDING ON THE SPECIES TO WATCH.



SPECIALIZED ACCOMMODATION

MONTE HOLIDAY ECOTURISMO

AN ESTATE FARM OF 250 HA (OVER 600 ACRES), LOCATED NEXT TO THE SIERRA DE GUADARRAMA NATIONAL PARK COUNTS WITH EMA (ECO-MANAGEMENT AND AUDIT SCHEME) AND OTHER INTERNATIONAL QUALITY STANDARDS. OFFERS 27 HA ACCOMMODATION WITH BUNGALOW AREA (2 TO 6 PEOPLE), 7 TREE-CABINS (2 TO 4 PEOPLE) AND A CAMPING AREA WITH 120 PLACES (FOR TENTS, CARAVANS, VANS) SWIMMING-POOL AND A RESTAURANT. ALSO THE 223 HA REMAINING (OVER 550 ACRES) ARE BIOLOGICAL RESERVE AND COUNT WITH TWO PERMANENT PHOTOGRAPHY HIDES FOR RAPTORS, INSECTIVOROUS BIRDS AND MAMMALS. ARRANGES ORNITHOLOGICAL TOURS IN RESERVE AND THE NATIONAL PARK WITH EXPERIENCED GUIDES.

WHERE TO EAT

GASTRONOMY IS THE PERFECT COMPLEMENT TO NATURE TOURISM AND ONE OF THE MOST APPEALING TOURIST RESOURCES IN OUR REGION.

THE RESTAURANT OFFER IN THE REGION OF MADRID IS VERY EXTENSIVE AND VARIED, AND ADAPTED TO ALL BUDGETS.

The success of Madrid's food scene is also due to its excellent raw materials. Its geographical location makes it a region that enjoys the majority of ecosystems, enabling it to offer a wide diversity of quality foods, many protected under distinctions such as the Madrid Designation of Origin Wines; Madrid Oil Guarantee Seal; Meat of Sierra de Guadarrama Protected Geographical Indication; Chinchón Anisette Geographical Designation; Olives of Campo Real Quality Designation and Certified Organic Products.

This variety of guaranteed quality produce is further expanded by other local guarantees, including Aranjuez strawberries and asparagus, Villacañeros melons, Villa del Prado vegetables, Sierra honey, Sierra Norte beans and pure sheep's cheese.

A visit to its wineries, oil mills or cheese factories is another of the activities you really need to do to enjoy the rural environment and savour its products.





ENJOY WINE TOURISM

MADRID WINE ROUTES

MADRID WINE ROUTES PROVIDE THE PERFECT WAY TO DISCOVER OUR LAND OF WINES AND ITS FRIENDLY PEOPLE, TO LIVE A WHOLE DELICATE EXPERIENCE AND TO TASTE THE HIGH QUALITY OF MADRID WINES



vinos de
madrid
Consejo Regulador D.O.



MADRID
RUTAS
DEL VINO

DISCOVER

WORLD HERITAGE IN MADRID

LESS THAN AN HOUR FROM MADRID ARE THREE PLACES THAT HAVE WARRANTED INCLUSION ON THE UNESCO WORLD HERITAGE LIST: SAN LORENZO DE EL ESCORIAL, ARANJUEZ AND ALCALÁ DE HENARES.

UNESCO WORLD HERITAGE

These three spaces are essential to knowing the cultural heritage of the Region of Madrid. But their importance extends beyond the region. The tangible and intangible heritage these three destinations assemble together is fundamental for anyone keen to learn about Spanish, European and universal culture.

2014 Passport: Exclusivity and quality guarantee

Only through your Passport will you be able to discover three unique places and enjoy immediate discounts in more than 250 restaurants, shops, hotels and activities. And with the stamps of the three municipalities you will get a very special prize.

The passport can be picked up and customised at the Mad About Info tourist information offices network and also contains all the information you need on the three destinations, maps, participating establishments and much more.



DISCOVER TOWNS OF MADRID: 6 JEWELS IN THE REGION



RASCAFRIA

YOU CAN ENJOY THE MONASTERY OF SANTA MARÍA DE EL PAULAR OR THE PRESILLAS



BUITRAGO DE LOZOYA

WALK ALONG THE WALL



NUEVO BAZTÁN

YOU CAN CONTEMPLATE THE GOYENECHE PALACE OR FOLLOW THE VALLE DE VALMORES TRAIL



COLMENAR DE OREJA

VISIT THE ULPIANO CHECO MUSEUM



NAVALCARNERO

TAKE IN THE AROMAS AND FLAVOURS AT THE WINE MUSEUM



CHINCHÓN

ENJOY ANY OF THE RESTAURANTS IN THE TRADITIONAL CASTILIAN SQUARE OF CHINCHÓN



VILLASDEMADRID

NOW, WITH **VILLACARD**, YOU WILL OBTAIN A MULTITUDE OF DISCOUNTS ON YOUR VISIT TO THE TOWNS.

MADRID
Region of Madrid **SPAIN**




DISCOVER

**MUSEOS
EXPOSICIONES
FESTIVALES
CENTROS DE ARTE CONTEMPORÁNEO
RUTAS TEMÁTICAS
CLÁSICOS EN ALCALÁ
MADRID EN DANZA
FESTIVAL DE OTOÑO A PRIMAVERA
SUMA FLAMENCA**

ENJOY ACTIVE TOURISM MULTI-ADVENTURE TOURISM



CYCLING: 91 KM OF GREEN WAYS , 367 KM OF MARKED MOUNTAIN BIKE ROUTES AND 122 KM OF INTERCITY CYCLING LANES



HILL WALKING: GUIDED AND SELF-GUIDED ROUTES, WITH DIFFERENT DEGREES OF DIFFICULTY



SAILING, WINDSURFING, PADDLE SURFING...5 RESERVOIRS FOR ENJOYING NATURE AND OUR TOURIST AND RECREATIONAL OFFER

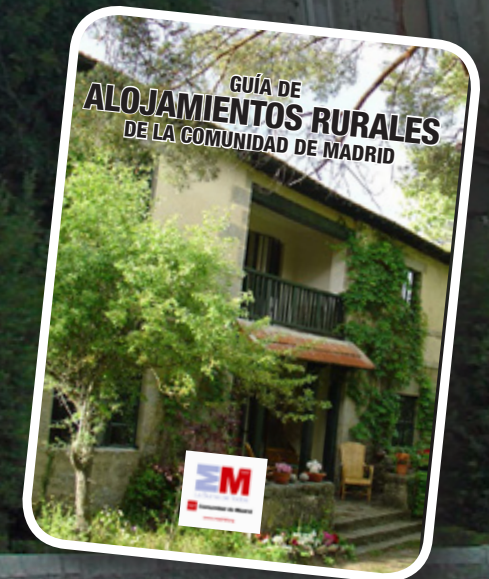


CANOEING

WHERE TO SLEEP

THE REGION OF MADRID HAS 16,822
HOTEL BEDS OUTSIDE OF THE
METROPOLITAN AREA.

THEY INCLUDE: HOTELS, RURAL HOTELS, B&BS,
RURAL APARTMENTS, CAMP-SITES AND TREE
HOUSES.



ARRIVING MADRID

BY PLANE:

ADOLFO SUAREZ- MADRID
BARAJAS AIRPORT

BY ROAD

HIGH SPEED TRAIN (AVE)

GETTING AROUND IN MADRID

LA COMUNIDAD DE MADRID

The Region of Madrid boasts an extensive network of infrastructures that links all of the towns in the region:

REGIONAL TRANSPORT CONSORTIUM

ROAD INFO

Access to the tourist destinations of natural, environmental and scenic interest is made possible in many cases thanks to the regional train network and in all cases thanks to the regional road network, either in private transport or the intercity bus network which links the capital with all of the towns.

The Regional Transport Consortium of Madrid [website](#) features the fares and timetables of all of its destinations in the different means of collective public transport in the Region.



**AND ALL OF THIS OFFER OF
RURAL, ACTIVE AND NATURE
TOURISM, WITH SPORTS AND
LEISURE ACTIVITIES...**

**JUST 1 HOUR FROM
THE CITY OF MADRID
AND ITS AIRPORT**

WWW.TURISMOMADRID.ES

